


moonglade shawl

Designed by
Rae Blackledge

Skill Level
Intermediate

Finished Size
Width: 30 (54)" [76 (137)cm]
Length: 15 (27)" [38 (69)cm]

Materials

- Willow Yarns™ Stream 
(70% superwash wool/30% silk;
50g/437yd
-732250-0003 Turquoise
[2 or 3 balls]
- US size 3 (3.25mm) 24" circular
needle or size needed to
obtain gauge
- Stitch markers
- Yarn needle

Gauge
2 pat reps of Chart B (24 sts x 24 rows) =
3" (7.6cm) in lace pat, blocked
Save time, check your gauge.

Pattern Notes

- Shawl starts at center back of the neck and incs out in 3 sections.
- Remember to read RS chart rows from right to left and WS chart rows from left to right, and that chart symbols will have different meanings on WS rows, so be sure to check the legend.
- The first time you work the main chart you will not need to rep the red section. Each time you work the main chart you will need to add 1 additional rep of the red section.



Instructions

Garter Tab

CO 3 sts with a backward lp CO.
K 16 rows.

Next Row: K3, pick up and k 8 sts along edge, pick up and k 3 sts from CO edge—14 sts.

Next Row: K3, pm, p2, pm, *p1, pm, p2, pm; rep from * once more, k3.

Chart A

Row 1 (RS): K3, sl m, work Chart A to next m, sl m, *k1, sl m, work Chart A to next m, sl m; rep from * once more, k3—6 sts inc'd.

Row 2 (WS): K3, sl m, work Chart A to next m, sl m, *p1, sl m, work Chart A to next m, sl m; rep from * once more, k3.

Rep the above rows until you reach the end of Chart A—68 sts.

Chart B

Row 1 (RS): K3, sl m, work Chart B to next m, sl m, *k1, sl m, work Chart B to next m, sl m; rep from * once more, k3—6 sts inc'd.

Row 2 (WS): K3, sl m, work Chart B to next m, sl m, *p1, sl m, work Chart B to next m, sl m; rep from * once more, k3.

Rep the above rows until you reach the end of Chart B—104 sts.

Next Row (RS): K3, sl m, work Chart B to next m, rep the red section as necessary, sl m, *k1, sl m, work Chart B to next m, rep the red section as necessary, sl m; rep from * once more, k3—6 sts inc'd.

Next Row (WS): K3, sl m, work Chart B to next m, rep the red section as necessary, sl m, *p1, sl m, work Chart B to next m, rep the red section as necessary, sl m; rep from * once more, k3.

moonglade shawl

Designed by
Rae Blackledge

Rep the above rows until you have repeated Rows 1-12 of Chart B 7 (15) more times—356 (644) sts.

Row 2 (WS): K3, p to last 3 sts, k3.

Rep the above rows until you have reached the end of the Edging Chart—422 (710) sts.

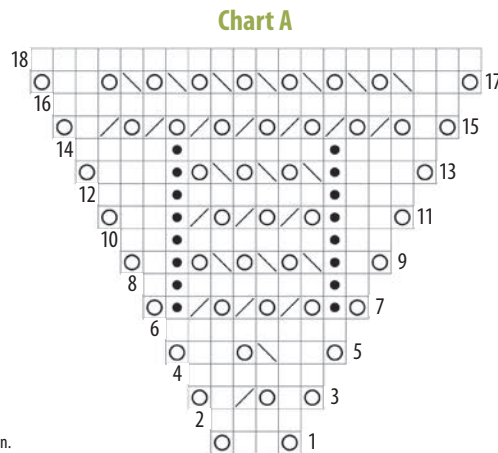
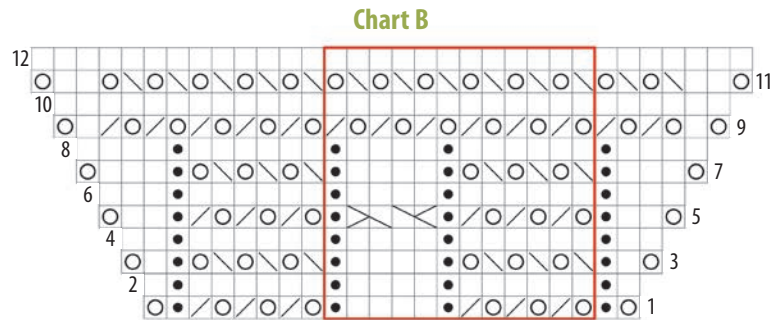
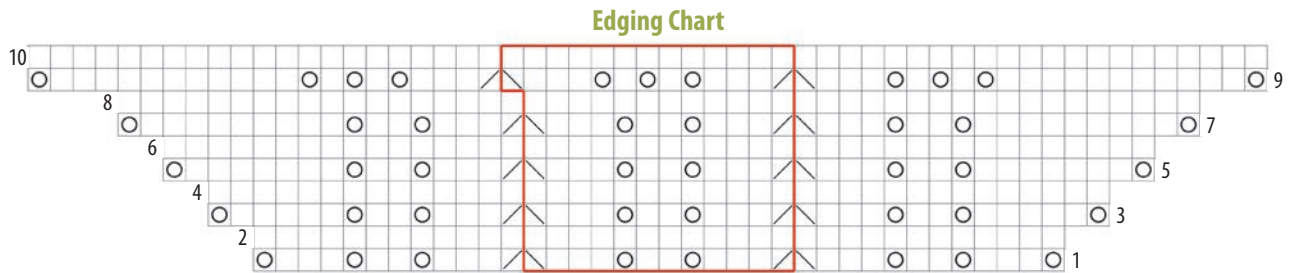
B0 all sts, very loosely.

Edging Chart

Row 1 (RS): K3, sl m, work edging chart to next m, rep the red section as necessary, sl m, *k1, sl m, work chart to next m, rep the red section as necessary, sl m; rep from * once more, k3—6 sts inc'd.

Finishing

Weave in ends. Block.



Legend

□ RS: Knit
WS: Purl

● RS: Purl
WS: Knit

○ Yo

▧ K2tog

▨ Ssk

▩ 2/2LC - sl 2 sts onto cn, hold to front, k2, k2 from cn.