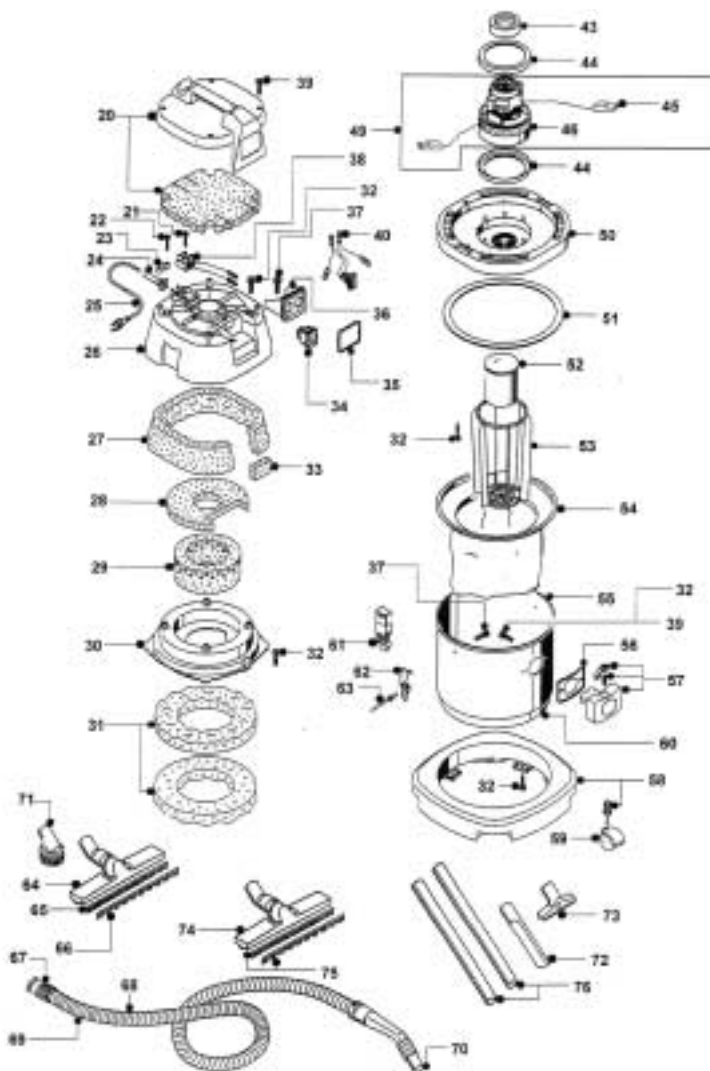


# WET/DRY VACUUMS

## Parts for PF30 and PF32



ref#	order	description
20	<b>FD65</b>	gray handle
21	<b>FD67</b>	screw
22	<b>FD18</b>	screw
23	<b>FD20</b>	terminal block
24	<b>FD8</b>	strain relief
25	<b>FD68</b>	power supply cord, black
26	<b>FD69</b>	blue cover
27	<b>FD74</b>	insulator
28	<b>FD75</b>	insulator
29	<b>FD77</b>	insulator
30	<b>FD78</b>	separator washer
31	<b>FD79</b>	insulator
32	<b>FD160</b>	screw
33	<b>FD76</b>	wire protector
34	<b>FD7</b>	bipolar switch
35	<b>FD73</b>	switch board gasket
36	<b>FD161</b>	switch housing
37	<b>FD162</b>	screw
38	<b>FD116</b>	2 pole terminal
39	<b>FD66</b>	screw
40	<b>FD163</b>	pigtail
43	<b>FD164</b>	gasket
44	<b>FD44</b>	motor gasket
45	<b>FD165</b>	motor wire
46	<b>FD166</b>	A40 motor at 115 volt
50	<b>FD167</b>	motor base
51	<b>FD168</b>	motor base gasket

ref#	order	description
52	<b>FD48</b>	complete float
53	<b>FD169</b>	float cage
54	<b>FD170</b>	complete filter
55	<b>FD171</b>	gray plastic tank (PF30)
56	<b>FD27</b>	intake gasket
57	<b>FD26</b>	complete intake
58	<b>FD172</b>	caster base
59	<b>FD173</b>	caster
60	<b>FD174</b>	stainless steel tank (PF32)
61	<b>FD175</b>	black nylon closing clamp
62	<b>FD42</b>	stainless steel closing clamp
63	<b>FD71</b>	rivet
64	<b>CT140</b>	floor tool
65	<b>CT144</b>	brush strip
67	<b>CT142</b>	hose connector to tank
68	<b>CT143</b>	hose only
69	<b>CT144</b>	complete hose
70	<b>CT145</b>	hose handle
71	<b>CT146</b>	dusting tool
72	<b>CT147</b>	crevice tool
73	<b>CT148</b>	upholstery tool
74	<b>CT149</b>	squeegee tool
75	<b>CT150</b>	squeegee blade
76	<b>CT151</b>	straight wand
NOT ILLUSTRATED		
	<b>FD180</b>	paper bag