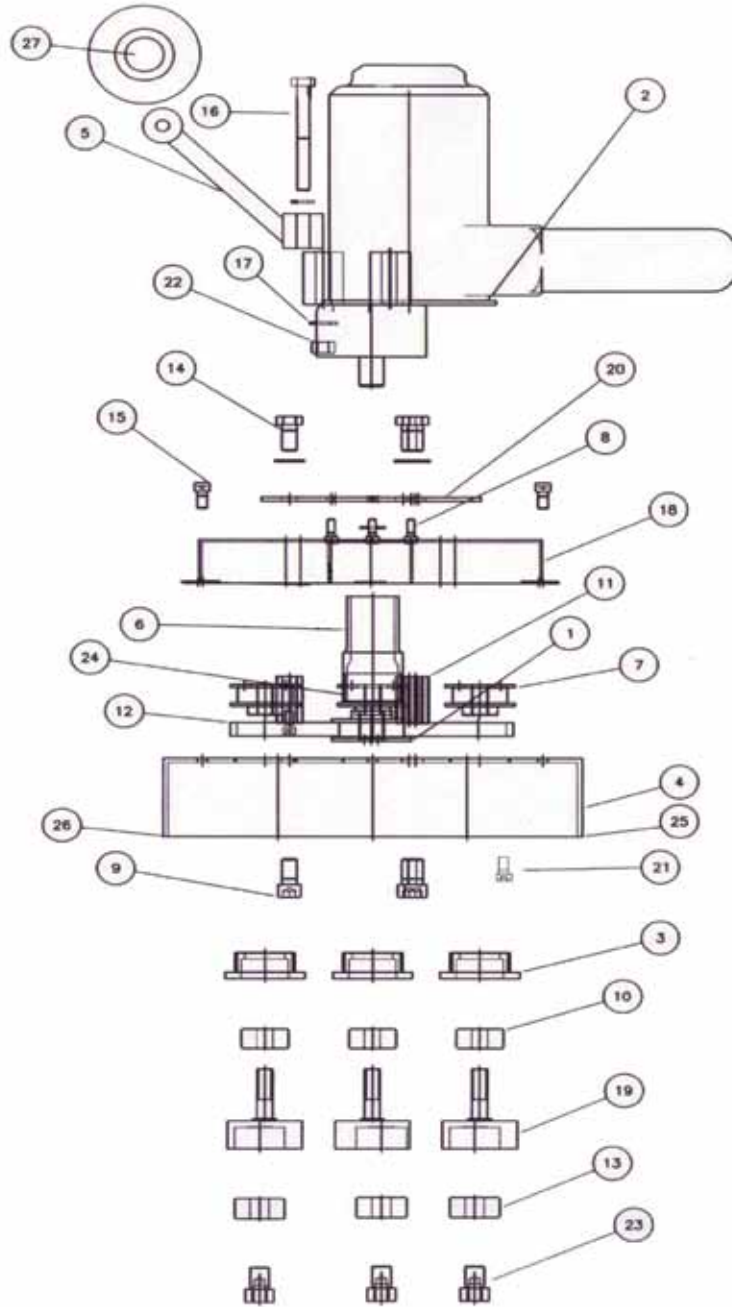


SCHEMATIC AND PARTS LIST



ref#	order	description
1	M-3002	motor pulley
2	MOTOR MINI	7" vs 8 amp motor
3	M-3003	housing
4	BB-002	deckplate-mds
5	M-3007	handle
6	M-3008	vac port
7	M-3001	spindle pulley
8	HW-007	hex-shcs 8-32 x 3/4
9	HW-006	hex-shcs 3/8-16 x 3/4
10	M-3005	bearing housing 5200zz
11	M-3009	standoff
12	HW-011	belt
13	M-3006	bearing lower shaft 5201ls
14	HW-003	hex bolt

ref#	order	description
15	HW-005	hex-shcs 1/4-20 x 1/2
16	HW-004	hex-hms 5/6-18-3
17	HW-008	washer-5/16
18	BB-001	belt cover
19	M-3000	mainshaft
20	BB-003	motor mount
21	HW-001	bolt-shcs 10-24
22	HW-002	nut - h
23	M-3004	lower shaft - mds
24	HW-012	locknut
25	M-3021	dust skirt base
26	M-3020	dust skirt
27	M-3022	pc handle