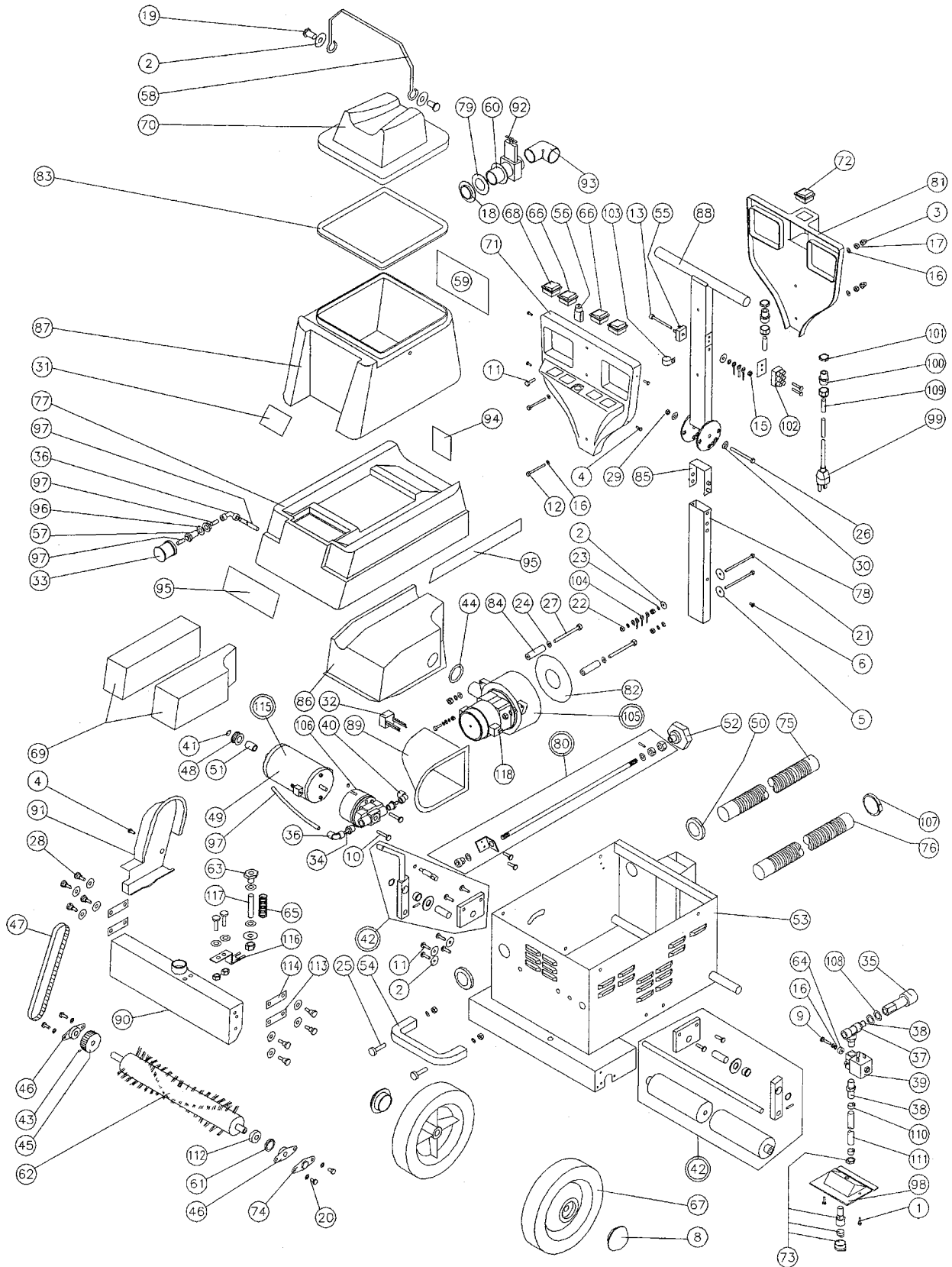


EXTRACTORS

Parts for PFX9S



EXTRACTORS

Parts for PFX9S

ref#	order#	description
1	2-218	NQ6 x 112" ST Screw
2	X8218	5mm x 20mm Washer
3	2-3396	M5 Dome Nut Black
4	2-3397	No 6 x 318 Pan Pozi Black
5	2-3399	M6 x 30 Washer Black
6	2-3405	1/8 x 8mm Pop Rivet
8	FD17	Starlock Cap for 20mm Shaft
9	M4-16-CP-ZN	M4 x 16 Pozi Pan Screw
10	SC87	M4 x 20 Pozi Screw
11	SC55	Mf5 x 10 Pczy Pan Screw
12	M5-E-BK	M5 x 40 Hex Screw Black
13	M5-70-A-ZN	M5 x 70 Socket Cap Screw
14	SC80	M5 x 8 Pozi Pan Screw
15	M5-I-BK	M5 Full Nut Black
16	M5-L-BK	M5 Plain Washer Black
17	M5-P-ZN	M5 Single Cdl Washer
18	PX46	M50 Hex nut with 1 Omm Collar
19	SC45	M6x16 Hex Set Screw
20	SC143	M6 x 8 Pozi Pan Screw
21	W80 E-ZN	M6 x 80 Hex Heaci Screw
22	M6-I-ZN	M6 Full Nut
23	M6-P-BK	MF6 Single Coil Washer Black
24	M6-S-ZP	M6 Extenal Shake proof Washer
25	TW065004	M6 x 22 Pan Slotted Screw
26	SC207	M8 x 75 Hex Head Screw
27	M8-100-E-ZN	M6 x 80 Hex Head Screw
28	SC205	Shoulder Bolt
29	SC209	8 nylon Washer
30	SC210	M8 Plain Washer
31	X8438	Powr-Flite Logo Label
32	TW000721	Suppressor Surge 110v USA
33	SC14	Filter Element
34	SC102	Adaptor Stem for Elbow
35	PX6	Quick Connector - Female Coupling
36	SC81	Plastic Elbow-
37	SC17	Tee Connector - Plastic
38	SC18	Adapter- Stem Straight
39	SC19	Valve 110v Shut off
40	SC18	Straight Adaptor 8.00 to 114 BSP
41	TW007036	Circlip Axle and Pump Shaft
42	SC108	Adjustable Roller Assermbly
43	SC83	M4 x 16mm Grub Screw
44	TW007119	Grommet Vac Motor Horn
45	SC5	60mm Brush Roller Pulley
46	SC1	Bearing Assembly for Brush
47	SC4	Brush Drive Belt
48	SC6	30mm Motor Drive Pulley
50	TW007096	Grommet Chassis to Vac. Hose
51	SC7	Roller Bearing Clutch
52	SC156	Height Adjustment Knob
53	TW008200	Super champ Chassis
54	2-3274	Front Lifting Handle
55	X8034	25 Amp Bridge Rectifier
56	SC11	Circuit Breaker ang Ear ZE7WB 15 amp MB
57	SC95	Bulkhead Fitting
58	SC65	Handle for Waste Tank
59	X8437	Powr-Flite Instruction Label
60	PX14	Gasket Neoprene Sponge
61	SC113	Bearing Cover
62	SC3	Brush Assembly Super champ
63	SC61	Height Adjustment Knob
64	SC142	Solenoid Spacer

ref#	order#	description
65	SC77	Spring Vac shoe tension
66	SC8	Switch splash-proof
67	SC26	Wheel Super champ
68	SC9	Switch 2 Pole
69	TW008523	Foam Set
70	SC15	Clear Top Cover Lid
71	SC24	Handle Front Cover (Unheated 3 openings)
72	SC10	Switch - Spray Rocker
73	SC31	Jet Body- Quick Release
74	SC126	End Cap for Bearing
75	SC49	Hose - Vacuum Shoe to Waste Tank
76	SC50	Hose - Vacuum Motor to Solution Tank
77	SC71	Solution Tank Super Champ Powr-Flite
78	SC203	Lower Handle Tube
79	TW065013	Plain 2mm Rubber Washer
80	SC232	Adjusting Rod Assembly
81	SC23	Rear Handle Cover
82	PX13	Gasket 125 x 50 x 2mm
83	SC16	Gasket Lid - Champ Mk2
84	SC42	ABS Extruded Spacer
85	SC93	U Locking Spring Assembly
86	TW018408	Silencer
87	TW008303	Recovery Tank Super Champ Powr-Flite
88	SC70	Upper Handle Tube
89	SC90	Cooling Air Duct
90	TW008459	Vacuum Head Casting
91	SC22	Pulley Guard
92	PX10	Gate Valve Type 600/625
93	PX11	Elbow for Gate Valve
94	X8436	Powr-Flite Warning Label
95	X8400	Powr-Flite Label Set Side and Front
96	SC96	15mmx3mm Plain Rubber Washer
97	SC20	8mm Nylon Tube - Red 5 C J.O
98	SC140	ABS Spray Jet Retainer Moulding
99	M1400C	Mains Cable Champ Plus Powr-Flite
100	SC57	M20 Cable Gland
101	SC56	M20 Cable Gland Nut
102	TW023046	Terminal Block 3 Way
103	TW023055	Cable Strain Relief "P" Clip
104	TW023092	6.5mm Earth Ring
105	1928	Motor Vac 3 Stage 110v
106	SC32	Bypass Pump Head - High Pressure
107	PX42	Hose Clip
108	SC114	M14 Plain Brass Washer
109	SC245	Cable Inlet Gland
110	TW033069	Jubilee Clip
111	SC229	High Pressure Hose 17" cut length
112	SC115	Brush Spacer
113	SC204	Vacuum Head Link - Small
114	TW008404	Vacuum Head Link - Large
115	SC29	Pump Less Head Assy
116	TW008342	Vacuum Head Spring locator
117	SC60	Vacuum Head threaded Stud
118	4-3200	Brush Mechanism Ref:33423-16 for 110v

NOT ILLUSTRATED

SC75 Filter Recovery Tank

* call for price and availability