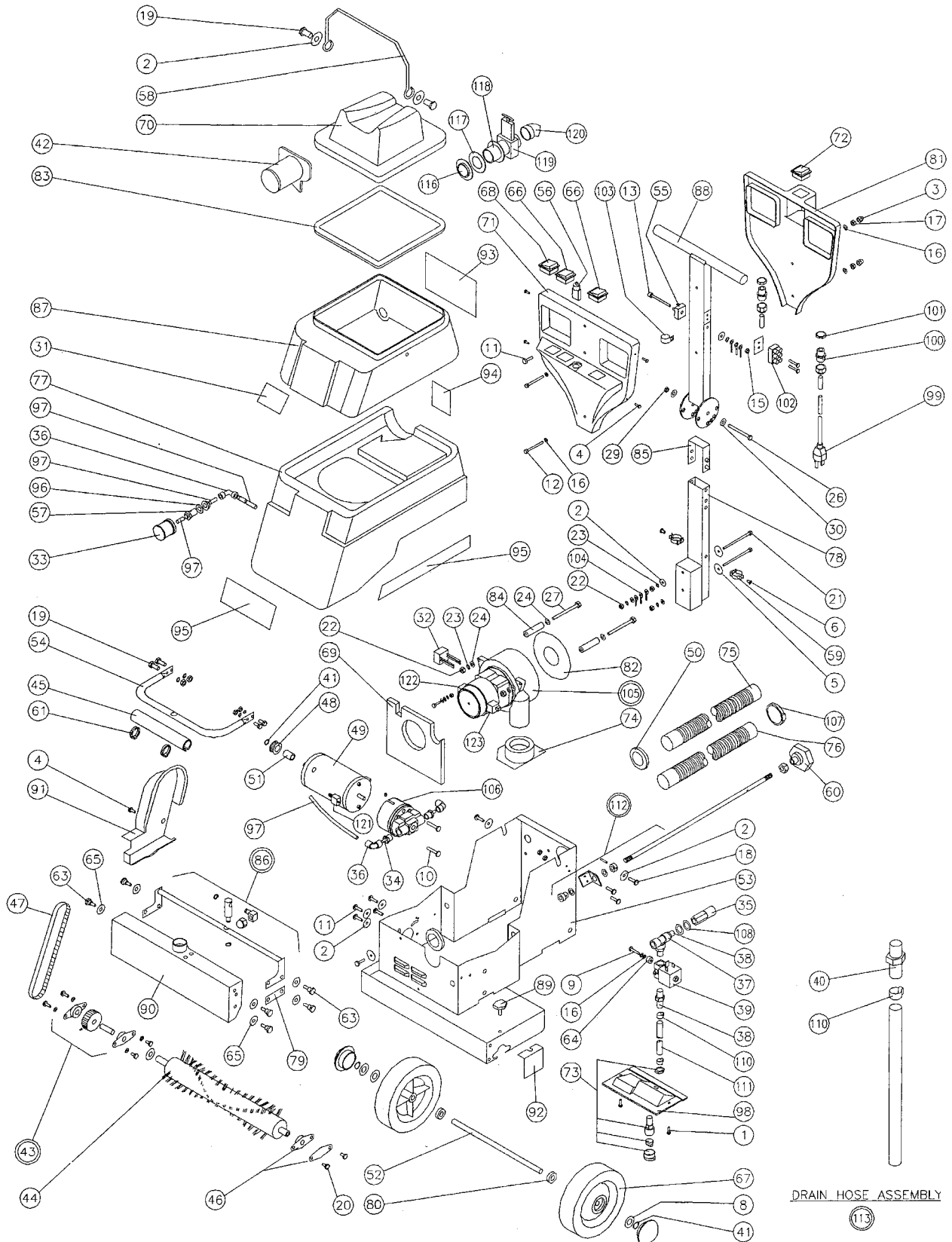


# EXTRACTORS

## Parts for PFX7S



# EXTRACTORS

## Parts for PFX7S

ref#	order#	description
1	<b>2-218</b>	No.6 x 112" ST Screw
2	<b>X8218</b>	5mm x 20mm Washer
3	<b>2-3396</b>	M5 Dome Nut Black
4	<b>2-3397</b>	No 6 x 318 Pan Pozi Black
5	<b>2-3399</b>	M6 x 30 Washer Black
6	<b>2-3405</b>	1/8 x 8mm Pop Rivet
8	<b>M12-LG-ZN</b>	M12 Plain Washer
9	<b>SC230</b>	M4 x 16 Pozi Pan Screw
10	<b>SC87</b>	M4 x 20 Pozi Screw
11	<b>SC55</b>	M5 x 10 Pozi Pan Screw
12	<b>M5-E-BK</b>	M5 x 40 Hex Screw Black
13	<b>M5-70-A-ZN</b>	M5 x 70 Socket Cap Screw
14	<b>SC80</b>	M5 x 8Pan Screw
15	<b>M5-I-BK</b>	M5 Full Nut Black
16	<b>M5-LG-BK</b>	M5 Plain Washer Black
17	<b>M5-P-ZN</b>	M5 Single Coil Washer
18	<b>M6-10-E-ZN</b>	M6 x 10 Hex Set Screw
19	<b>SC45</b>	M6 x 16 Hex Set Screw
20	<b>SC143</b>	M6 x 8 Pozi Pan Screw
21	<b>SC206</b>	M6 x 80 Hex Head Screw
22	<b>M6-I-ZN</b>	M6 Full Nut
23	<b>M6-P-BK</b>	M6 Single Coil Washer Black
24	<b>M6-S-ZP</b>	M6 External Shake proof Washer
25	<b>M8-20-E-ZN</b>	M8 x 20 Hex Head Bolt
26	<b>SC207</b>	M8 x 75 Hex Head Screw
27	<b>M8-80-E-ZN</b>	M6 x 80 Hex Head Screw
28	<b>SC208</b>	M8 Full Nut
29	<b>SC209</b>	M8 Nylon Washer
30	<b>SC210</b>	M8 Plain Washer
31	<b>X8438</b>	Powr-Flite Logo Label
32	<b>SC51</b>	Suppressor Surge 110v USA
33	<b>SC14</b>	Filter Element
34	<b>SC102</b>	Adapter Stern for Elbow
35	<b>PX6</b>	Quick Connect Female Coupling
36	<b>SC81</b>	Plastic Elbow
37	<b>SC17</b>	Tee Connector-Plastic
38	<b>SC18</b>	Adapter- Stern to Quick fit
39	<b>SC19</b>	Valve 110v Solenoid Shut Off
40	<b>PX5</b>	Quick Coupling Male Brass
41	<b>SC82</b>	Circlip
42	<b>SC75</b>	Filter Recovery Tank
43a	<b>SC5</b>	Pulley, Brush Roller 60mm Ref: 28 XL
44	<b>SC3</b>	Assembly Brush Super Champ
45	<b>TW040056</b>	Sleeving for Handle
46	<b>SC1</b>	Champ Brush Bearing Cover & Assembly
47	<b>SC4</b>	Brush Drive Belt
48	<b>SC6</b>	30mm Motor Drive Pulley
49	<b>SC29</b>	Pump Less Head
50	<b>SC107</b>	Grommet Chassis to Vac. Hose
51	<b>SC7</b>	Roller Bearing Clutch
52	<b>SC33</b>	Main Wheel Axle
53	<b>SC69</b>	Chassis Champ Plus Powr-Flite
54	<b>SC68</b>	Front Lifting Handle
55	<b>X8034</b>	25 Amp Bridge Rectifier
56	<b>SC11</b>	Circuit Breaker zing Ear ZE700B 15 amp
57	<b>SC95</b>	Bulkhead Fitting
58	<b>SC65</b>	Handle for Waste Tank
59	<b>SC112</b>	Clip Black Plastic Coated
60	<b>TW007470</b>	Height Adjusting Knob
61	<b>TW007520</b>	Cable Tie Wrap
63	<b>SC205</b>	Shoulder Screw
64	<b>SC142</b>	Solenoid Spacer
65	<b>X8218</b>	Washer

ref#	order#	description
66	<b>SC8</b>	Switch splash-proof
67	<b>SC25</b>	Wheel 7"
68	<b>SC9</b>	Switch 2 Pole
69	<b>SC104</b>	Air Deflector Champ Plus Powr-Flite
70	<b>SC15</b>	Clear Top Cover Lid Champ Plus
71	<b>SC24</b>	Handle Front Cover
72	<b>SC10</b>	Switch - Spray Rocker
73	<b>SC31</b>	Jet Body- Quick Release
74	<b>SC101</b>	ABS Vacuum Motor Locator
75	<b>SC48</b>	Hose - Vacuum Shoe to Waste Tank
76	<b>SC47</b>	Hose - Vacuum Motor to Solution Tank
77	<b>SC36</b>	Solution Tank. Champ Plus Powr-Flite
78	<b>SC202</b>	Lower Handle Tube
79	<b>SC204</b>	Link
80	<b>SC155</b>	ABS Axle Spacer
81	<b>SC23</b>	Rear Handle Cover
82	<b>PX13</b>	Gasket 125 x 50 x 2mm
83	<b>SC16</b>	Gasket Lid - Champ Mk2
84	<b>SC42</b>	ABS Extruded Spacer Champ Plus
85	<b>SC93</b>	U Locking Spring Assembly s
86	<b>SC58</b>	Link Rod Assembly
87	<b>SC35</b>	Recovery Tank. Champ Plus Powr-Flite
88	<b>SC70</b>	Upper Handle Tube
89	<b>SC43</b>	Knob
90	<b>SC85</b>	Vacuum Head Casting
91	<b>SC22</b>	Pulley Guard
92	<b>TW007656</b>	Plate
93	<b>X8437</b>	Powr-Flite Instruction Label
94	<b>X8436</b>	Powr-Flite Warning Label
95	<b>X8400</b>	Powr-Flite Label Set Side and Front
96	<b>SC96</b>	5mm x 3mm Plain Rubber Washer
97	<b>SC20</b>	8mm Nylon Tube - Red
98	<b>SC140</b>	ABS Spray Jet Retainer Moulding
99	<b>M1400C</b>	Mains Cable Champ Plus Powr-Flite
100	<b>SC57</b>	M20Cable Gland
101	<b>SC56</b>	M20 Cable Gland Nut
102	<b>TW023046</b>	Terminal Block 3 Way
103	<b>TW023055</b>	Cable Strain Relief "P" Clip
104	<b>TW023092</b>	.5mm Earth Ring
105	<b>1928</b>	Motor Vac 3 Stage 110v
106	<b>SC30</b>	Bypass Pump Head
107	<b>TW033063</b>	Hose Clip
108	<b>SC114</b>	M14 Plain Brass Washer
109	<b>SC245</b>	Cable Inlet Gland
110	<b>PX42</b>	13mm x 18mm O-Clip
112	<b>SC110</b>	Adjusting Rod Assembly
113	<b>SC200</b>	Drain Hose Assembly w/ PX5
116	<b>PX46</b>	M50 Nut with integral Collar
117	<b>TW065013</b>	M50 Washer
118	<b>PX14</b>	Neoprene Gasket
119	<b>PX10</b>	Gate Valve
120	<b>PX11</b>	Elbow
121	<b>TW007178</b>	Carbon Brush (Pump Motor)
122	<b>TW065088</b>	Carbon Brush (Vac Motor 105)
123	<b>TW065051</b>	Carbon Brush Interrupter (Vac Motor 105)

\* call for price and availability