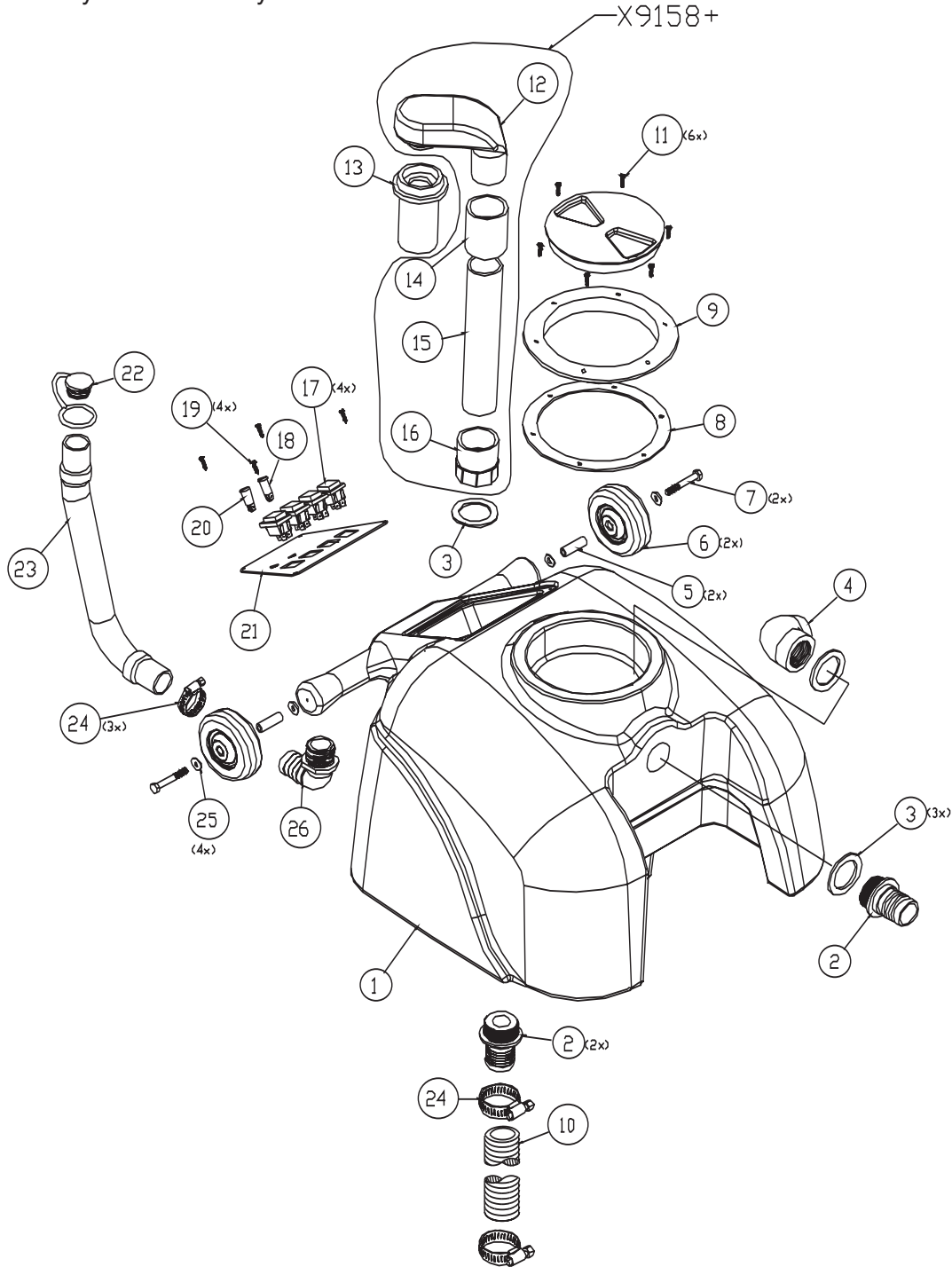


MODEL PFX1350 SERIES CARPET EXTRACTOR PARTS

PFX1350 recovery tank assembly

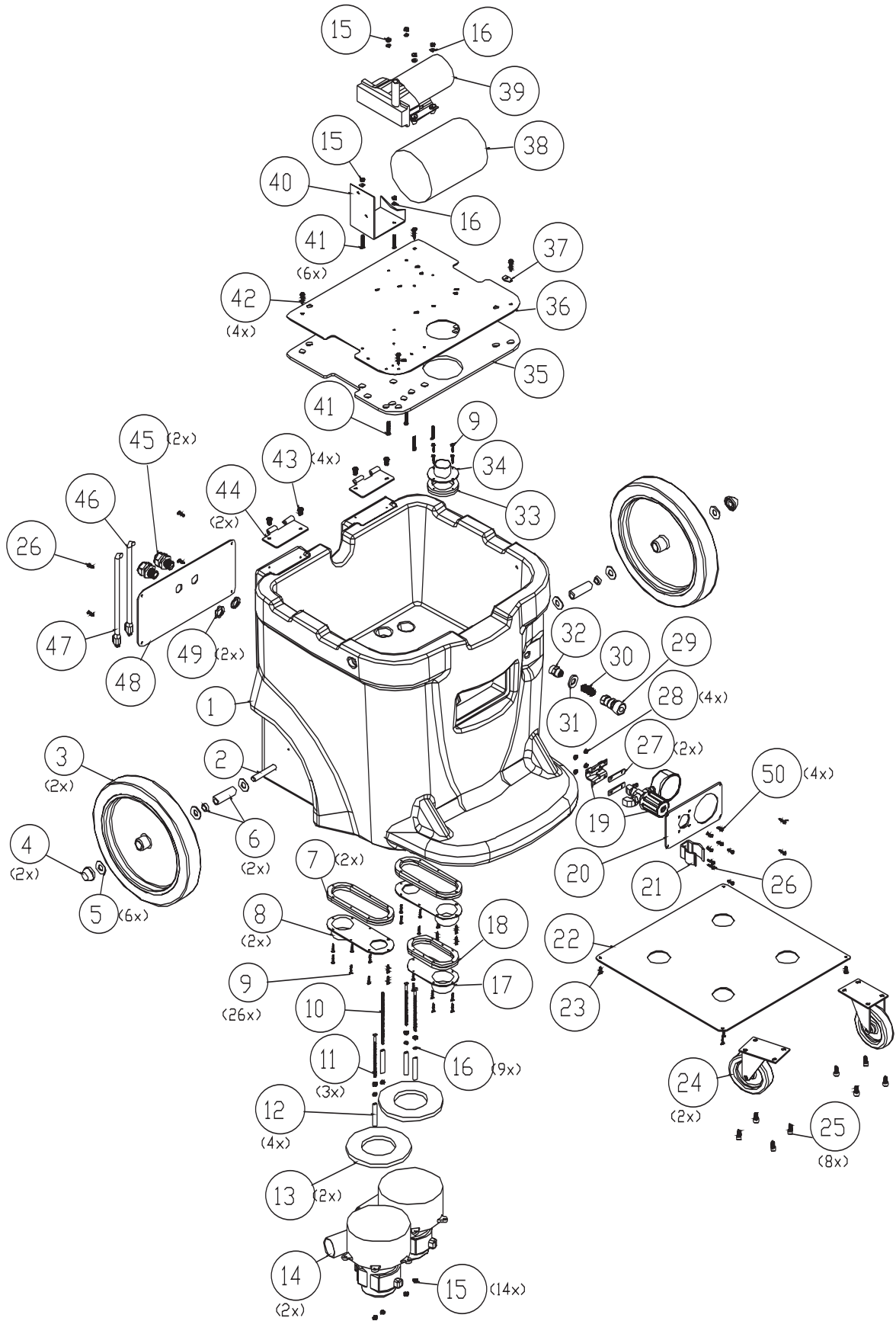


ref#	order#	description
1	X9113	housing, recovery tank
2	PX25	fitting, plastic, hose barb
3	PX14A	dump valve gasket rubber
4	PX11A	fitting, plastic elbow
5	72486A	spacer, 1.625 long, .50 od, .313 id
6	X8025	wheel, black, 4" x 1-1/4"
7	72645A	bolt, 5/16-18 x 2-1/4, hex
8	PX103G	gasket, lid, 8"od x 6-5/8 id x 1/8" thick
9	PX103	lid, screw-in, 6" clear w/ black ring
10	72656A	hose, 1-1/2", wire-reinforced, black
11	X8295	screw, black zinc
12	PX33	vacuum tube
13	PX31	float cage w/ heavy ball
14	72615A	coupling, pvc, 1-1/2 slip x slip

ref#	order#	description
15	X9154	pipe, pvc, schedule 40, 1-1/2", 9.5" long
16	PX63	coupler, plastic, 1- " slip
17	PX87	rocker switch
18	X8102	neon light w/ lens, orang
19	72387A	screw, #8 x 5/8 phil ph black
20	PX86	indicator light, green, 250v
21	X9152	switch panel w/o heater
	X9130	switch panel w/ heater
22	PAS36	expansion plug drain
23	PAS37	drain hose
24	7DL005	clamp worm gear 1-1/2 ss
25	X8235	washer, " flat, uss zinc
26	7GR016	elbow, 1-1/4" - 1-1/4m, nylon

MODEL PFX1350 SERIES CARPET EXTRACTOR PARTS

PFX1350 base assembly



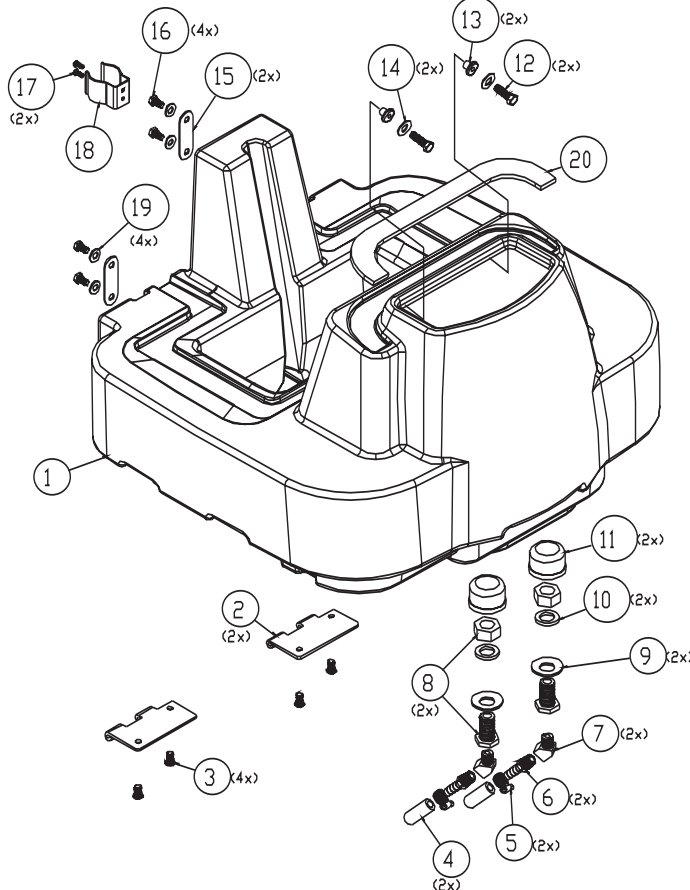
MODEL PFX1350 SERIES CARPET EXTRACTOR PARTS

PFX1350 base assembly

ref#	order#	description
1	72620AB	housing, base, black
2	72633A	axle
3	X9066 PX106B	wheel, 12" x 1.75" non-marking, wheel, 12" w/ 3/4" bore, all black
4	7GL002	push nut
5	7CM007	washer, 1/2" uss flat, 18-8 ss
6	72634A 72635A	bushing, 1/2" id x 3/4" od x 2-1/4" long spacer, 1/2" id x 3/4" od x 1/4" long
7	72640A	gasket, vac manifold, long
8	72623A	cover, vacuum manifold, long
9	7CW002	screw, #6 x 3/4 phil pan ts, type a 18-8 ss
10	72000A	rod, 3/16 x 5-1/2, all thread stud, 18-8 ss
11	72657A 72658A	screw, 10-24 x 4" long, hex head screw, 10-24 x 5" long, hex head
12	72651A	spacer, vac motor, 2.375" long
13	70020B	gasket, vacuum motor seal
14	1942-IE 72365A	vacuum motor, 115 vac, 104 cfm, 2 stage vacuum motor, 3 stage, 120v
15	7BF003	nut, kep, #10-24 zinc
16	7CM003	washer, #10 uss flat, 18-8 ss
17	72624A	cover, vacuum manifold, short
18	72641A	gasket, vac manifold, short
19	PX117A PC38	gauge, 0-300 psi, 2-1/2", abs connector, double thread
20	72638A X9157	pressure regulator plate cover, pressure regulator plate
21	72173A	spring clip, black vinyl coated
22	72636A	cover plate, bottom
23	72388A	screw, #10 x 5/8, tap phil, ss pan head
24	PX65	caster, 4" black

ref#	order#	description
25	72490A	screw, 5/16-18 x 5/8, cap screw w/ hex socket
26	72387A	screw, #8 x 5/8, black, tap phil, pan head
27	72639A	gasket, mounting pressure regulator
28	X8256	nut, 8-32 keps, zinc
29	70063B	coupler, valved 1/4, quick disconnect
30	7CX002	nipple, hex 1/4 mpt
31	72115A	washer, 5/8 x 1-3/16, bonded seal, galvanized
32	PC38	connector, double thread, female
33	72642A	gasket, vac manifold, circle
34	72625A	cover, vacuum manifold, circle
35	72627A	gasket, pump mounting
36	72626A	pump mounting plate
37	X9069	end loop, ss, w/ 2 holes, 16g
38	PF1750 PF1200 PF2000	heater unit, 1750 watts heater, 1200w for low flow heater, 2 1000 watt element (split)
39	PT400 SF814 PT400-KIT3	pump, 200 psi w/regulator, 115v pump, 100 psi w/by-pass, epdm valves pump assembly, 400 psi w/ hoses
40	X9022	heater mounting bracket
41	X8236	screw, 10-24 x 1-1/4", phil pan ms, zinc
42	72020A	screw, #12 x 1", self-tap, phms zinc
43	7BS003	screw, 1/4-20 x 1/2, phil, pan, ms 18-8 ss
44	X9014	hinge
45	PDB	strain relief, 1/2" npt
46	PX112	pigtail, black, 12/3 sjt x 39" long
47	PR112R	pigtail, red, 12/3 sjt x 39" long
48	X9131	cord panel
49	X8008N	nut, lock, 1/2" steel conduit
50	7BS002	screw, 8-32 x 1/2 phil, pan ms, 18-8 ss

PFX1350 solution tank assembly



ref#	order#	description
1	X9112	housing, solution tank
2	X9014	hinge
3	7BS003	screw, phil pan ms, 18-8 ss
4	PX3H	hose, solution, 3/8" id x 1/8" wall
5	PX42	clamp, 5/8 worm gear
6	PX85	fitting, hose male/male barb
7	PX17	street elbow, 45° brass, 1/4" npt
8	PX48	fitting, brass, bulkhead, 3/4
9	72274A	washer, 3/4"
10	PX48G	gasket, fiber
11	71495A	pump protection filter
12	7CT002	bolt, 5/16-18 x 1" hex tap
13	PX88	grommet
14	7CM002	washer, flat #8 ss, toggle valve
15	X9140	tie down plate
16	7CP002	bolt, 5/16-18 x 1/2" hex tap
17	7BH004	screw, 10-32 x 3/8" phil pan ms
18	72173A	spring clip, black vinyl coated
19	X8218	washer, 5/16 sae flat zinc
20	X9149	gasket, foam strip

Perfect Heat™ Plus System



WARNING! The Perfect Heat™ Plus System can produce very hot water that could damage some delicate fabrics and fibers. Please ensure the surface being cleaned will not be damaged by hot water up to 200 degrees Fahrenheit.

This machine is equipped with the Perfect Heat™ Plus System for heating the cleaning solution. This system uses a combination of the patent pending Perfect Heat™ coils and an inline electrical heater.

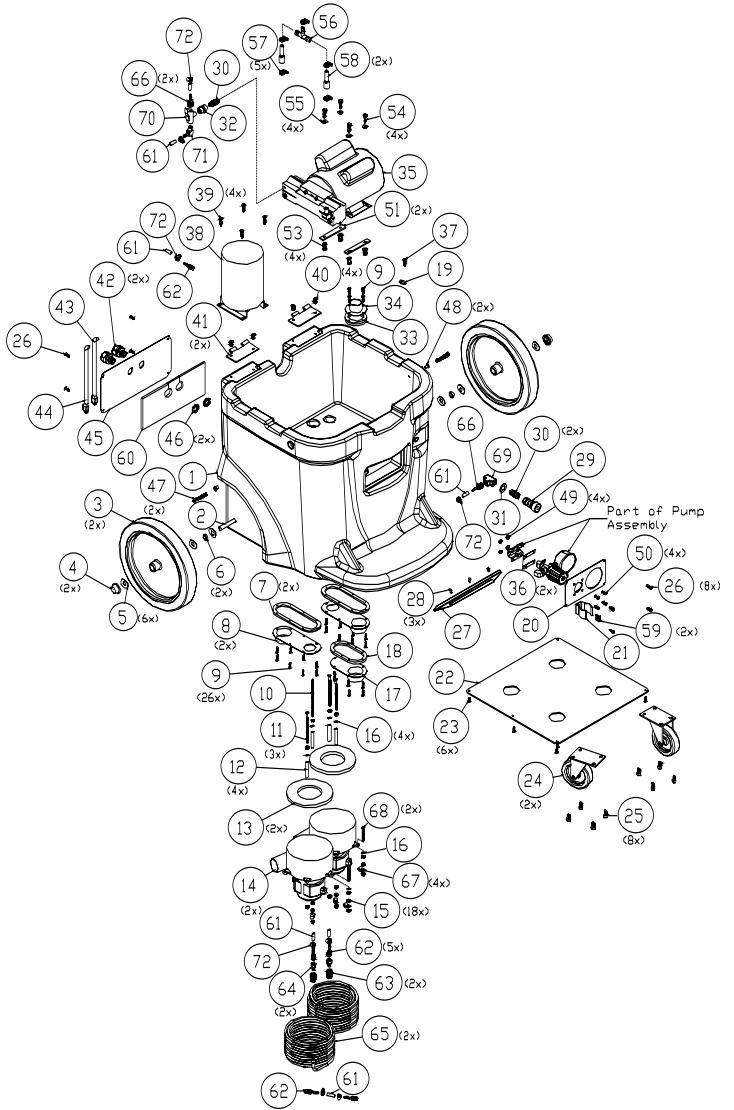
Operation:

1. Follow operating instructions steps for filling the machine with water and cleaning solution.
2. Turn on electrical heater, switch is located on panel.
3. Pre-heat machine for 5-10 minutes before use.

NOTE: There is a valve in the upper compartment that either sends the water through the heating components, or bypasses them. The machine is preset in the “HOT” position. To clean with cold water, turn the valve to “COLD” or UP position. This should be done prior to filling the tank with water. For general cleaning, it is recommended leaving the valve in the “HOT” or down position and cleaning with hot water.



Ref #	Part #	Description	Qty
01	72620AB	Housing, Base, Black	1
02	72633A	Axle, 23.375" Long	1
03	X9066+	Wheel, 12" x 1.75" Non-Marking, Gray Tire on Black Wheel	2
04	7GL002	Push Nut	2
05	7CM007	Washer, 1/2 USS Flat, 18-8 SS	6
06	72635A	Spacer, 1/2" ID x 3/4" OD x 1/4" Long	2
07	72640A	Gasket, Vac Manifold, Long	2
08	72623A	Cover, Vacuum Manifold, Long	2
09	7CW002	Screw, #6 x 3/4 Phil Pan TS, Type A 18-8 SS	26
10	72000A	Rod, 3/16 x 5-1/2, All Thread Stud, 18-8 SS	1
11	72658A	Screw, 10-24 x 5" Long, Rnd Slot, Zinc, Fully Threaded	3
12	72605A	Spacer, 1/8" Schedule 80 PVC, 3.5" Long	4
13	70020B	Gasket, Vacuum Motor Seal	2
14	72611A	Vacuum Motor, 3-Stage, 230V, 5.7IN	2
15	7BF003	Nut, Kep, #10-24 Zinc	18
16	7CM003	Washer, #10 USS Flat, 18-8 SS	6
17	72624A	Cover, Vacuum Manifold, Short	1
18	72641A	Gasket, Vac Manifold, Short	1
19	X9069+	End Loop, SS, w/ 2 holes, 16G	1
20	72638A	Pressure Regulator Plate	1
21	72173A	Spring Clip, Black Vinyl Coated	1
22	72636A	Cover Plate, Bottom	1
23	72388A	Screw, #10 x 5/8, Tap Phil, SS Pan Head	6
24	PX65+	Caster, 4" Black	2
25	7DT001	Bolt, 5/16-18 x 5/8, Hex Tap Zinc	8
26	72387A	Screw, #8 x 5/8, Black, Tap Phil, Pan Head	8
27	72661A	Wand Holder	1
28	72662A	Screw, #10, Phil Flat SM, Black, Undercut Head	3
29	PX6+	1/4 x 1/4 Female Quick Disconnect, Brass	1
30	7CX002	Nipple, Hex 1/4 MPT	2
31	X8239+	Washer, USS Flat Zinc	1
32	PC38+	Connector, Double Thread, Female, 1/4" to 1/4" Coupling	1
33	72642A	Gasket, Vac Manifold, Circle	1
34	72625A	Cover, Vacuum Manifold, Circle	1
35	72643A	Pump Assembly, 500 PSI	1
36	72639A	Gasket, Mounting Pressure Regulator	2
37	71644A	Screw, #10 x 1", Phil Pan, TS, Type A 18-8 SS	1
38	PF1750-2+	Heater Unit, 220V	1
39	72020A	Screw, #12 x 1", Self-Tap, PHMS, Zinc	4
40	7BS003	Screw, 1/4-20 x 1/2, Phil, Pan, MS 18-8 SS	4
41	X9014+	Hinge	2
42	PD8+	Strain Relief, 1/2" NPT	2
43	PX112+	Pigtail, Black, 12/3 SJT x 39" Long	1
44	PX112R+	Pigtail, Red, 12/3 SJT x 39" Long	1
45	X9131+	Cord Panel	1
46	X8008N+	Nut, Lock, 1/2" Steel Conduit	2
47	X9177+	Screw, Phil Pan, Ext Tooth Washer, Fully Threaded	2
48	72665A	Insert, Tee Nut, ?-20 Thread, ? High, .305 Barrel Diameter	2
49	X8256+	Nut, 8-32 Keps, Zinc	4
50	7BS002	Screw, 8-32 x 1/2 Phil, Pan MS, 18-8 SS	4
51	7GF033	Pad, Motor Mount	2
53	X8848+	Jacknut, 1/4-20, Steel, #8 LJN	4
54	7EW001	Screw, 1/4-20 x 3/4", Phil, Pan, MS SS	4
55	X8235+	Washer, 1/4 Flat, USS, Zinc	4
56	71521A	Tee, Barb, 1/2" x 1/2" x 1/2"	1
57	7DL008	Clamp, 1/2" Worm Gear, SS, Hex Slot	5
58	70079C	Hose, 1/2" Wire Reinforced	42"
59	X9098+	Screw, #10 x 1", A point, PH pan head	2
60	X9178+	Foam, Cord Panel	1
61	X8542+	Hose, Solution, 1/4" ID, 400 PSI	70"
62	PC66+	Fitting, Brass, 1/8 NPTM x 1/4 Hose Barb	5
63	71130A	Coupler, QD, 1/8 M	2
64	70101A	Nipple, QD, 1/8 F, Brass	2
65	72713B	Heater coil, 3-Stage Vacuum	1
66	7AT003	Barb, Hose, 1/4 H - ? M	2
67	SW158+	Cable Clamp	2
68	X8244+	Screw, 10-24 x 2", Phil, Pan MS, Zinc	2
69	7AV001	Tee Union, 1/4 NPT	1
70	72726A	Valve, 3-Way	1
71	PX212+	Fitting, Brass, 90° Elbow, 1/4 NPTM x 1/4 Hose Barb	1
72	7DL003	Clamp, Hose, 1/4"	7



Troubleshooting Information

ELECTRICAL SYSTEM

PROBLEM	POSSIBLE CAUSE	SOLUTION
No electrical power.	1. Defective power cord. 2. Circuit breaker off or fuse blown.	1. Replace 2. Turn circuit breaker on or replace fuse. Unplug any equipment using the same circuit.
Switch is turned on.	1. Faulty electrical cable.	1. Repair or replace.
Intermittent power to motor(s).	2. Defective switches. 3. Loose terminal or discolored terminal connections.	2. Replace. 3. Replace.
Electrical Shock	1. Equipment not grounded.	1. Locate grounded outlet.

VACUUM SYSTEM

PROBLEM	POSSIBLE CAUSE	SOLUTION
Vacuum motor on Little or no vacuum on wand head.	1. Drain hose open. 2. Defective vacuum hose 3. Vacuum disconnected	1. Close drain hose. Recovery tank lid must be closed. 2. Repair or replace hose. Kinks in vacuum hose. 3. Open machine, connect vacuum hose to recovery tank.
Not enough vacuum power at the machine.	1. Damaged recovery tank lid. 2. Lint clogging ball-type shutoff screen. 3. Vacuum hose connection between stand pipe and vacuum motor. 4. Vacuum motor exhaust blocked. 5. Cords not plugged into separate circuits	1. Replace 2. Remove screen. Clean out fibers and accumulated dirt. 3. Check for leaks around clamps and cuffs (tighten). Replace damaged hose(s). 4. Check air flow by removing hose from machine and feel the exhaust under the machine. Remove obstruction. 5. Relocate one cord to a different room.

VACUUM SYSTEM

PROBLEM	POSSIBLE CAUSE	SOLUTION
Motor running and no vacuum at all.	1. Faulty vacuum motor.	1. Replace.
No exhaust from the blowport.	2. Water shutoff closed.	2. Clean water shutoff screen.
Premature closing of ball type shutoff.	1. Dirty or clogged shutoff filter screen.	1. Remove and clean screen.
Ball type shutoff failing to release after recovery tank is drained.	2. Ball coated with detergent or other foreign material. 2. Screen slightly out of round.	2. Remove and rinse ball with clean water. 3. Bend screen by squeezing slightly by hand until there is an obvious space between ball and inside of screen.

Foam/dirty solution coming out of vacuum exhaust port.	1. Foam from carpet bypassing water shutoff. 2. Elbow in vacuum tank is not positioned correctly.	1. Use additional defoamer. 2. The elbow should be pointed directly at the side wall of the tank away from the ball type shutoff.
--	--	--

SOLUTION SYSTEM

PROBLEM	POSSIBLE CAUSE	SOLUTION
Pump motor on – no spray through jets.	1. Clogged or faulty solution control valve. 2. Clogged or faulty quick disconnect on housing. 3. Punctured pump diaphragm. 4. Clogged jets	1. Check intake on valve and remove lint or other foreign material. 2. Depress plunger on solution hose against inside wall of solution tank. If solution is flowing at this point, the system is O.K. If no solution flows, check the quick disconnect for lint and other foreign matter. 3. Replace with diaphragm repair kit. 4. Clean jets on wand or tool.

PROBLEM	POSSIBLE CAUSE	SOLUTION
Uneven spray from jet. Spray weak or uneven.	1. Clogged strainer in solution tank. 2. Clogged jet.	1. Unscrew strainer and remove lint and any other foreign material from screen. 2. Remove and clean.
Leaking or stuck solution valve.	1. Foreign material in valve. 2. Loose brass hex nut. 3. Valve worn or seals worn.	1. Remove brass hex plug, clean valve and replace. 2. Reseal hex and plug. 3. Replace worn parts with solution valve repair kit.
Pump motor not working.	1. Loose wiring 2. Defective pump pressure switch 3. Motor burnout	1. Tighten wiring 2. Replace with new pressure switch assembly 3. Replace pump motor
Pump pressure low	1. Clogged screens on 2. Punctured pump diaphragm. 3. Defective rectifier or motor. 4. Pump not primed	1. Unscrew strainer in solution tank remove lint and any other foreign material from screen. 2. Replace with diaphragm repair kit. 3. Replace. 4. Plug priming hose into solution connection and place end in solution tank. Run pump for 4 minutes
Pump pressure varies.	1. Worn carbon brushes. 2. Defective pump pressure control switch.	1. Replace brushes. 2. Replace.

WARRANTY

The manufacturer warrants to the original purchaser that products manufactured are free from defects of workmanship and material, provided such goods are installed, operated and maintained in accordance with written manuals or other instructions for a period of 5 years from date of purchase on housings and frame, 3 years on heater, 1 year on pump, vac motor, and parts and workmanship. In case you as our customer, meet any trouble with your machine, contact your Powr-Flite representative who will be happy to be of service to you and will take care of the warranty settlement.

NOTE: Alterations and changes made to the machine without written approval of the manufacturer and use of unapproved spare parts will not be covered by warranty.

Powr-Flite[®]
COMMERCIAL FLOOR CARE EQUIPMENT

A Tacony Company

3101 Wichita Court • Ft. Worth, TX 76140-1710