

Powr-Flite[®]

COMMERCIAL FLOOR CARE EQUIPMENT

Commercial Stand-up Extractors



OPERATOR'S MANUAL

Save These Instructions

IMPORTANT SAFETY PRECAUTIONS

WARNING! To reduce the risk of fire, electric shock, or injury

WARNING
To avoid fire, DO NOT use with a flammable or combustible liquid to clean floor.



WARNING
To avoid electric shock, DO NOT expose to rain. Store Indoors.

When using this self contained extractor, basic precautions should always be followed, including the following:

- 1) **DO NOT** leave unit when plugged in. Unplug from outlet when not in use and before servicing.
- 2) **DO NOT** allow unit to be used as a toy. Close attention is necessary when used around or near children.
- 3) Use only as described in this manual. Use only manufacturer's recommended attachments.
- 4) **DO NOT** use with damaged cord or plug. If unit is not working properly because it has been dropped, dropped into water, left outdoors, or damaged in any way, contact a service center of Powr-Flite®.
- 5) **DO NOT** pull or carry by cord, use cord as a handle, close door on cord, or pull cord around sharp edges or corners. **DO NOT** run unit over cord. Keep cord away from heated surfaces.
- 6) **DO NOT** unplug by pulling on cord. To unplug, grasp the plug, not the cord.
- 7) **DO NOT** handle plug or appliance with wet hands.
- 8) **DO NOT** put any objects into openings. **DO NOT** use with any opening blocked: keep free of dust, lint, hair, or anything that may reduce air flow.
- 9) Keep hair, loose clothing, fingers, and all parts of body away from openings and moving parts.
- 10) **DO NOT** pick up anything that is smoking or burning such as cigarettes, matches, or hot ashes.
- 11) **DO NOT** use to pick up hazardous chemicals.
- 12) Turn off all controls before unplugging.
- 13) Turn unit off immediately if foam or liquid comes from machine exhaust. Empty & clean out recovery (dirty) tank and use defoamer to correct the problem.
- 14) **DO NOT** use to pick up flammable or combustible liquids such as gasoline or use in areas where they may be present.
- 15) **DO NOT** use where oxygen or anesthetics are used.
- 16) **DO NOT** use an extension cord.
- 17) Replace damaged or worn parts immediately with genuine original equipment parts to maintain safety.
- 18) This unit must be connected to a properly grounded outlet only. See **grounding instruction on page 4.**

MEDIDAS DE SEGURIDAD

PELIGRO! Para reducir el riesgo de incendio, descarga eléctrica o daño:

NO SE exponga a la lluvia a guarde bajo techo. Una sacudida eléctrica puede suceder si se usa en superficies húmedas.

NO utilice la unidad para levantar líquidos f lamables o combustibles como gasolina.

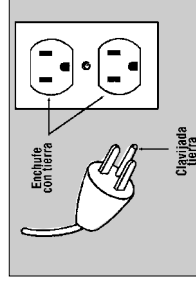
PARA SU SEGURIDAD

- 1) **NO DEJE** la aspiradora enchufada. Desconecte la cuando no la use y antes de darle servicio.
- 2) **NO PERMITA** que se use como juguete. Ponga atención cuando se use cerca de niños.
- 3) **USE SE SOLAMENTE** de acuerdo a las instrucciones y con accesorios recomendados por el fabricante.
- 4) **NO USE** con el cable o clavija dañados. Si la unidad ha sido golpeada, mojada, o dañada en algún modo llame al centro de servicio o Powr-Flite®.
- 5) **NO JALE** o carque del cable, no machuque el cable o lo estire sobre objetos filosos. **NO USE** la unidad sobre el cable.
- 6) **NO DESENCHUFE** jalando el cable. Para hacerlo jale de la clavija no del cable.
- 7) **NO TOME** la clavija o el aparato con las manos mojadas.
- 8) **NO TAPE** objetos en las ventillas. **NO USE** si alguna está tapada. Mantenga limpia de polvo, peluza o cualquier obstrucción.
- 9) Mantenga el pelo, ropa suelta manos y partes del cuerpo lejos de las aberturas y partes móviles.
- 10) **NUNCA** aspire objetos que mandose o humeando como cigarras, cerillos o cenizas calientes.

INSTRUCCIONES DE TIERRA

¡PELIGRO!

Una conexión incorrecta de tierra puede resultar en una descarga eléctrica. Consulte con un electricista calificado o persona de servicio si tiene duda acerca del enchufe y su tierra. No modifique el enchufe de las unidades. Si no encaja en el enchufe, haga instalar un enchufe apropiado por un electricista calificado.



IMPORTANTES MEDIDAS DE SEGURIDAD

AVERTISSEMENT! Pour réduire les risques d'incendie, de choc électrique ou de blessure:

NE PAS aspirer de matières humides. Ne pas exposer à l'intérieur.

NE PAS utiliser l'appareil avec des liquides inflammables en aspirant afin d'éviter du feu.

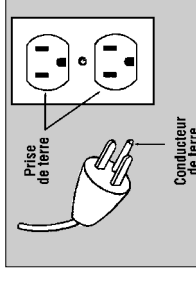
POUR VOTRE SÉCURITÉ

- 1) **NE PAS** laisser l'appareil sans surveillance lorsqu'il est branché. Débrancher lorsque l'appareil n'est pas utilisé et avant l'entretien.
- 2) **NE PAS** permettre aux enfants de jouer avec l'appareil. Une attention particulière est nécessaire lorsque l'appareil est utilisé par des enfants ou à proximité de ces derniers.
- 3) N'utiliser que conformément à cette notice avec les accessoires recommandés par le fabricant.
- 4) **NE PAS** utiliser si le cordon ou la fiche est endommagé. Retourner l'appareil à un atelier de réparation s'il ne fonctionne pas bien, s'il est tombé ou s'il a été endommagé, oublié à l'extérieur ou immergé.
- 5) **NE PAS** tirer, soulever ou trainer l'appareil par le cordon. **NE PAS** utiliser le cordon comme une poignée, le concier dans l'embrasure d'une porte ou l'appuyer contre des arêtes vives ou des coins. **NE PAS** faire rouler l'appareil sur le cordon. Garder le cordon à l'écarte des surfaces chaudes.
- 6) **NE PAS** débrancher en tirant sur le cordon. Tirer plutôt la fiche.
- 7) **NE PAS** toucher la fiche ou l'appareil lorsque vos mains sont humides.
- 8) **NE PAS** utiliser des rallonges ou des prises qui n'ont pas de capacité suffisante pour transporter le courant.
- 9) **NE PAS** utiliser ou l'oxygène ou les gazes sont utilisés.
- 10) **N'INSÉRER** aucun objet dans les ouvertures. **NE PAS** utiliser l'appareil lorsqu'une ouverture est bloquée. S'assurer que de la poussière, de la peluche, des cheveux ou d'autres matières ne réduisent pas le débit d'air.
- 11) Maintenir les cheveux, les vêtements amples, le doigts et toutes les parties du corps à l'écart des ouvertures et des pièces mobiles.
- 12) **NE PAS** aspirer de matières en combustion ou qui dégagent de la fumée, comme des cigarettes, des allumettes ou des cendres chaudes.
- 13) **NE PAS** utiliser l'aspirateur pour soulever les produits chimiques dangereux.
- 14) Mettre toutes les commandes à la position **ARRÊT** avant de débrancher l'appareil.
- 15) Couper le courant immédiatement si le liquide de nettoyage sort de l'appareil. Videz et nettoyez le réservoir interim et admettez le liquide de nulle écume.
- 16) **NE PAS** aspirer des liquides inflammables ou combustibles, comme de l'essence, et ne pas faire fonctionner dans des endroits où peuvent se trouver de tels liquides.
- 17) Remplacer taré parties vite à maintenir sécurisé.
- 18) Ne brancher qu'à une prise de courant avec mise à la terre. Voir les instructions visant la mise à la terre.

INSTRUCIONS VISANT LA MISE À LA TERRE

AVERTISSEMENT!

Un conducteur de terre mal raccordé peut entraîner un risque de choc électrique. Consulter un électricien ou un technicien d'entretien qualifié si vous n'êtes pas certain que la prise soit correctement mise à lat terre. Ne pas modifier la fiche fournie avec l'appareil-se elle ne peut être insérée dans la prise, faire installer une prise adéquate par un électricien qualifié.



GROUNDING INSTRUCTIONS

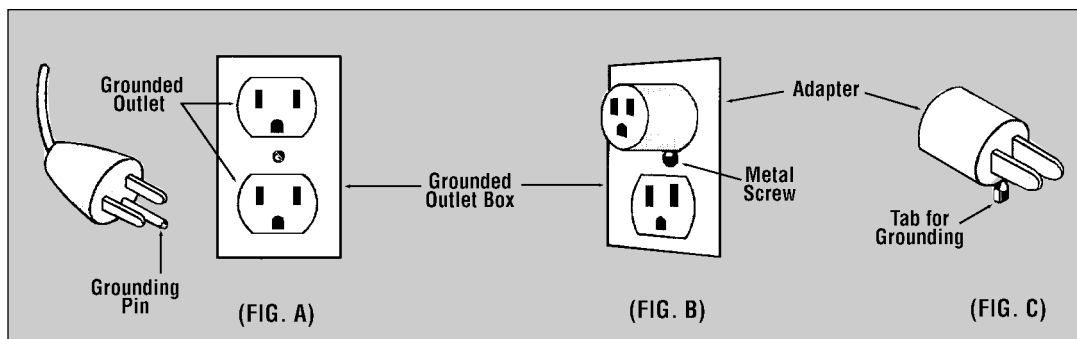
DANGER: Improper use of the grounding plug can result in a risk of electric shock.

GROUNDING INSTRUCTIONS

This self-contained extractor must be properly grounded. If it should malfunction or breakdown, grounding provides a path of least resistance for electrical current to reduce the risk of electric shock. This machine is equipped with a cord having an equipment-grounding conductor and grounding plug. The plug must be inserted into an appropriate outlet that is properly installed

and grounded in accordance with all local codes and ordinances. If repair or replacement of the cord or plug is necessary, **DO NOT** connect the grounding wire to either flat blade terminal. The wire with insulation having an outer surface that is green with or without stripes is the grounding wire.

GROUNDING METHODS



This unit is for use on a nominal 120 volt circuit and has a grounded plug that looks like the plug illustrated in (Fig. A). A temporary adapter that looks like the adapter illustrated in (Fig. B&C) may be used to connect the plug to a 2-pole receptacle as shown in (Fig. B) if a properly grounded outlet is not available.

The temporary adapter should be used only until a properly grounded outlet (Fig. A) can be installed by a qualified electrician. The green color rigid ear, lug, or the like extending from the adapter must be connected to a permanent ground such as a properly grounded outlet box cover. Whenever the adapter is used, it must be held in place by a metal screw.

NOTE: In Canada, the use of a temporary adapter is not permitted by the Canadian Electrical Code.

WARNING!

Improper connection of the equipment-grounding conductor can result in a risk of electric shock. Check with a qualified electrician or service person if you are in doubt as to whether the outlet is properly grounded. DO NOT modify the plug provided with the appliance. If it will not fit the outlet, have a proper outlet installed by a qualified electrician.

General instructions for 1100 series Extractors

Shipping and Damage

This equipment is thoroughly inspected, tested, and packaged to provide equipment in good operating condition. It is beyond our control after the equipment is turned over to a freight carrier. The freight carrier received and signed for the equipment in good condition. Consequently, it is most important to protect your interest by carefully complying with the following instructions:

Please inspect your cartons for any damage (including concealed damage) that might have occurred during shipment. Any damage is the responsibility of the freight carrier and should be reported to the freight carrier immediately. It is your responsibility to issue a claim and to receive compensation from the freight carrier for any damage done in transit. Damage of this sort is not warranted.

Follow these easy step by step instructions to insure proper operating performance.

1. Anyone designated to operate this equipment must, without fail, read and thoroughly understand all instructions and precautions prior to use.
2. Never use equipment out of doors or in the rain.
3. Open machine by pulling out the two spring loaded pins at the rear of the machine. Open slowly and detach vacuum hose at bottom of vacuum tank to inspect the internal workings of the machine. This will expose the vacuum motors, pump and electrical components. Check the wiring to ensure that nothing has been dislocated or shaken loose during shipment. If damage has occurred during transit, follow the steps outlined under "shipping". Regular inspection of these components is advised to avoid damage to the equipment or personal injury. Close the machine by replacing vacuum hose to bottom of vacuum tank and gently close and re-latch with spring loaded pins.
4. Insert cord end into a dedicated and grounded 20 amp. wall socket. Also, attach vacuum and solution hoses to appropriate connections on the machine and cleaning wand. As this procedure is followed, always inspect hoses for cracks or fraying. Failure to do this can result in damage to the equipment and/or serious personal harm or death. Defective or damaged parts must be repaired or replaced by an authorized repair center before equipment can be safely operated.
5. Mix hot water and approved extractor detergent in a clean bucket and carefully fill solution tank in front of machine. Do not overfill!
6. Turn pump to "on" position. Hold lever on wand open until fluid begins to flow.
7. **Never use flammable or explosive materials in or around this equipment!!!**
8. When vacuum tank is full, empty by using drain valve at rear of machine. If a pail is used to empty the vacuum waste tank, do not use the same pail to fill the solution tank as this can result in putting dirt and grit into the solution line that can plug filters, orifices, and generally degrade the solution line system.
9. To empty solution tank, detach the wand from the end of the vacuum hose and insert the vacuum hose into the solution tank. Turn the vacuum switch to "on" position and transfer solution to vacuum tank and dispose of as outlined in #8. Clean vacuum stack filter at this time.

Maintenance

To receive reliable service from this equipment, regular daily maintenance is a requirement. Fabric cleaning, both carpet and upholstery, are very dirty environments for any equipment. The following recommendations are offered.

1. Keep the equipment clean, both inside and out.
2. Lubricate brass quick disconnects and drain valves with a quality lubricant such as WD-40.
3. Flush solution systems weekly with clear, clean water. (A white vinegar solution may also be used).
This will counter-act hard water and alkaline deposits and aid in keeping orifices clean.
4. Do not allow fluid either in solution or waste tank to sit overnight. The unit should be emptied and cleaned daily.
5. Clean the strainer in the solution tank, the filter on vacuum stack in vacuum tank and the lint filter in the inlet or vacuum tanks daily.
6. Do not use the same receptacle (bucket) to fill solution tank that is used to remove waste from vacuum tank.
7. When the unit is not in use, leave the vacuum tank lid open.
8. At the end of each day, run the vacuum for 3 minutes with lid open and filter off.

Safety Precautions

These precautions are designed with the safety of the operator, the equipment, and others in mind and must be followed at all times to avoid serious personal harm and/or death, and damage to the unit.

1. Always use a grounded electrical outlet.
2. Always disconnect electric cable from electrical outlet before attempting to make any adjustments or repairs.
3. Never use this equipment as a toy.
4. Never use equipment near or around flammable or explosive materials, fuels, or solvents.
5. Never put flammable materials, fuels, or solvents into equipment.
6. Never lift the machine by the drain valve. To lift the machine, use the built in handle on the front of the unit and the handle/cord wrap at the rear of the unit.
7. **Do not allow the unit to freeze!**
8. The equipment was not designed to be used outdoors or in the rain.
9. Do not operate in standing water.
10. Wear safety equipment and clothing to protect from extremely hot water.
11. Do not operate equipment under any unsafe condition.

12. Do not operate if power cords, hoses, etc. are cracked, frayed, leaking, or otherwise in need of repair.
13. Common sense is a powerful force in protecting the operator, the equipment and others from serious damage injury and/or death.

Storage of Equipment

1. Store extractor with the cord wrapped around the handle.
2. Recovery and solution tank should be empty and clean when the extractor is not in use.
3. Leave the recovery lid and dump valve open to air out the recovery tank.
4. Do not store in freezing temperature.
5. A small amount of windshield washer fluid available at an auto supply may be left in the pump and internal solution line for protection against freezing.

Warnings

1. Do not break off or pull the grounding prong on the plug.
2. Do not attempt repair on a warranted machine unless instructions to perform it by an authorized shop are obtained from the factory.
3. Do not use citrus-based cleaners in this machine.
4. Do not use cleaning chemicals in this machine except those recommended for steam-type extraction equipment. The use of any chemicals with abrasive additives voids the warranty.
5. Do not use any replacement parts except those specified on the parts list. Performance of the machine could be affected if substitutions are made.
6. Do not use water in excess of 140° F (62° C) through the pump system. It could damage the seals and polypropylene casing of the diaphragm pump.
7. Follow maintenance schedule strictly.
8. **Failure to comply with the above warnings instructions will void the warranty.**

ONE LAST REMINDER

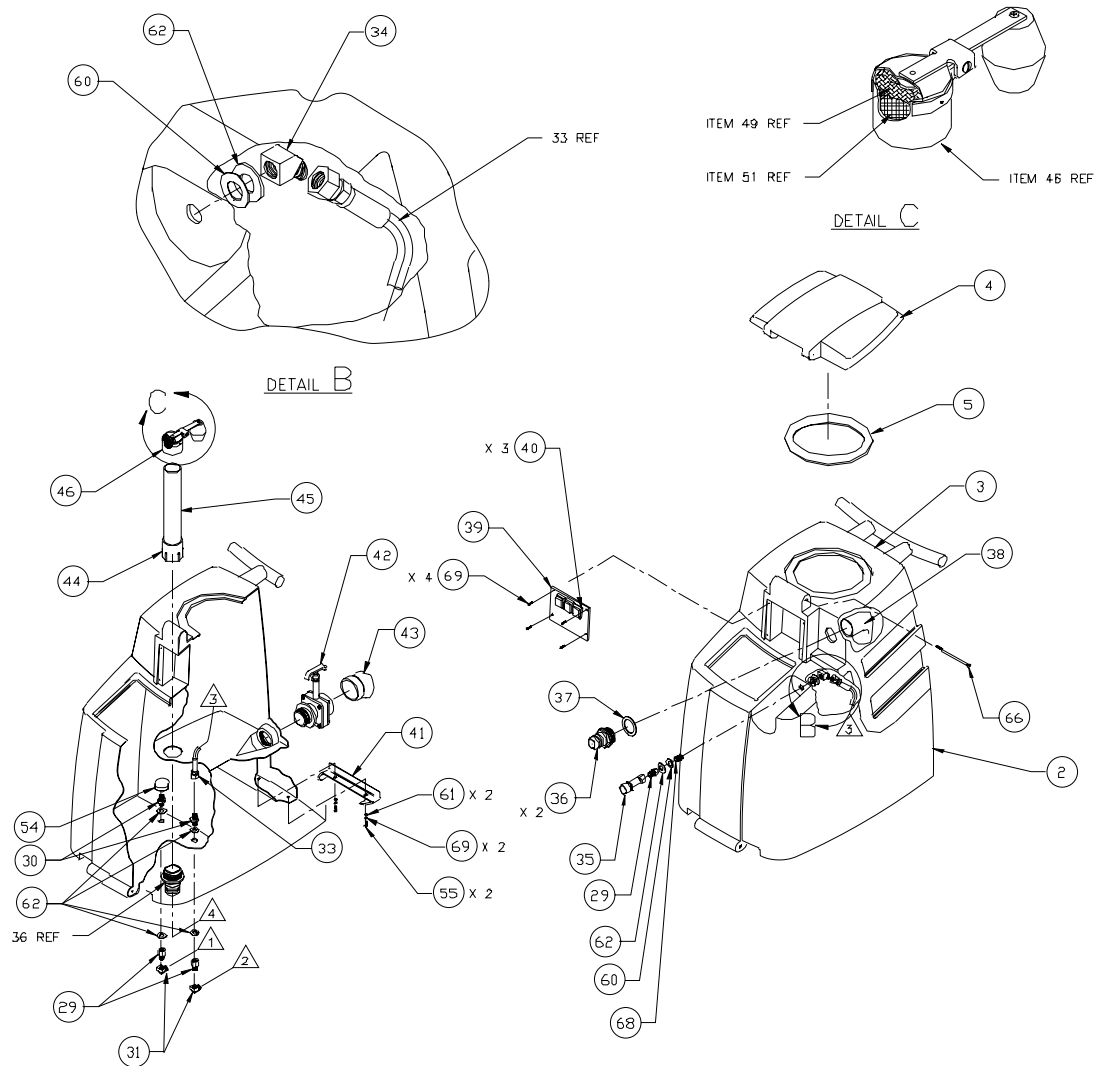
Read All Instructions, Warning and Cautions Before Using

These guidelines are presented for your protection and convenience. Please read them carefully, since failure to heed these precautions could result in discomfort or injury. When using an electrical appliance, basic safety precautions should always be followed.

WARNING

TO AVOID FIRE, DO NOT USE WITH A FLAMMABLE OR COMBUSTIBLE LIQUID TO CLEAN FLOOR.

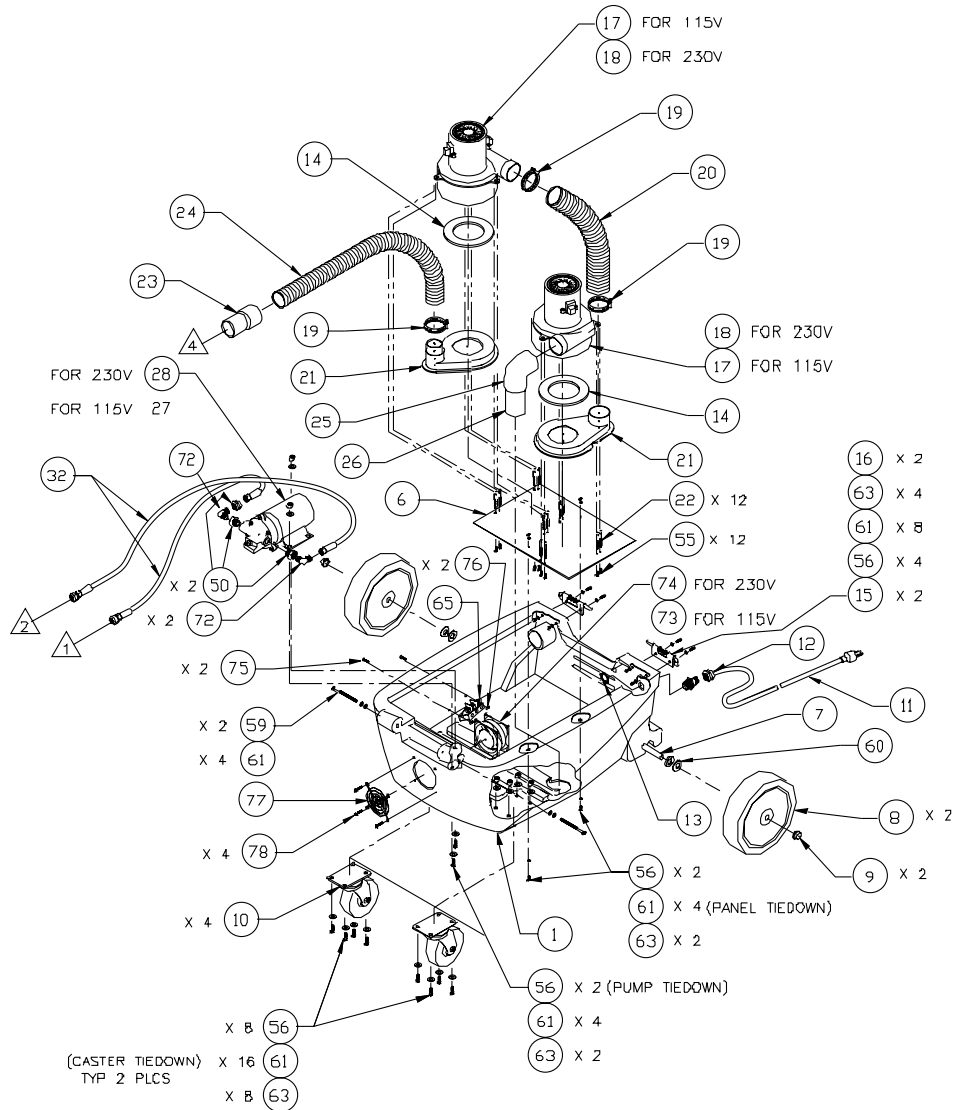
PFX1100 CARPET EXTRACTOR PARTS



ref.#	order	description
1	STE1	base
2	STE2	solution tank
3	STE3	vacuum tank
4	STE4	lid
5	STE5	gasket
6	STE6	vacuum mounting plate
7	STE7	axel
8	STE8	8" wheel
9	STE9	axel cap
10	STE10	3" caster
11	STE11	50' power cable w/ 3 prong connector
12	STE12	strain relief
13	STE13	locknut
14	STE14	vac gasket
15	STE15	hinge pin
16	STE16	hinge pin rubber sleeve
17	STE17	2 stage vac motor, 115v
18	STE18	2 stage vac motor, 230v
19	STE19	hose clamp

ref.#	order	description
20	STE20	2" vacuum hose 9" long
21	STE21	manifold
22	STE22	spring
23	STE23	blk hose cuff
24	STE24	2" vacuum hose 20" long
25	STE25	2" 90° elbo PVC
26	STE26	2" PVC pipe 3" long
27	STE27	100 PSI pump, 115v
28	STE28	100 PSI pump, 230v
29	STE29	1/4 extender adaptor
30	STE30	1/4 hex nipple
31	STE31	90° 1/4" x 1/4
32	STE32	21" high pressure hose
33	STE33	18" high pressure hose
34	STE34	45° 1/4 x 1/4
35	STE35	1/4 female quick disconnect
36	STE36	1-1/2 M.T. x M.S. inlet
37	STE37	thin rubber gasket
38	STE38	PVC elbow
39	STE39	3 hole switch plate

PFX1100 CARPET EXTRACTOR PARTS



ref.#	order	description
40	STE40	waterproof switches
41	STE41	bracket
42	STE42	1-1/2" drain valve
43	STE43	45° drain spout
44	STE44	PVC FM.S x FM.T
45	STE45	1-1/2" PVC pipe 12-1/2" long
46	STE46	float flapper assembly
47	STE47	1-1/2" ABS sleeve
48	STE48	clamping ring
49	STE49	1.88 filter foam
50	PC20	3/8" X 1/4" reducer
51	STE51	metal screen
52	STE52	float flapper
53	STE53	float
54	STE54	filter strainer
55	STE55	1/4-20 x 1/2" H/C S/S
56	STE56	1/4-20 x 3/4" H/C DOM GR 5ZN
57	STE57	1/4-20 x 1-1/4" H/C S/S
58	STE58	1/4-20 x 1-1/2" H/C S/S
59	STE59	1/4-20 x 3" H/C S/S

ref.#	order	description
60	STE60	fiber washer 6/16 ID x 1-1/16 OD
61	STE61	1/4" flat washer
62	STE62	washer 9/16 ID x 1-1/8 OD F.W.
63	STE63	1/4-20 locknut
64	STE64	1/4 lockwasher
66	STE66	#10-32 x 1-1/2" SHCS
67	STE67	#10 flat washer
68	STE68	1/4 close nipple
69	STE69	#8-32 x 3/8" SHCS
70	STE70	10-32 x 1/2" screw
71	STE71	10-32 x 1" screw
72	STE72	90° 1/4M x 1/4M elbow
73	STE73	Cooling Fan 115v
74	STE74	Cooling Fan 230v
75	STE75	10-32 x 1/2" Screw
76	STE76	10-32 Square Nut
77	STE77	Wire Formed Guard
78	STE78	10-32 x 1/2" Screw

Power-Flite[®]
COMMERCIAL FLOOR CARE EQUIPMENT

A Tacony Company
Ft. Worth, TX 76140