

- Please retain these instructions for future reference.
- Do not allow your Luna™ to come into contact with water or other liquids.
- In the event of an electro-static discharge, your Luna™ may malfunction. In this case, please switch it off and then back on again to reset it.
- Warranty is void if the case is opened for any reason.
- The warranty does not cover any data loss from the unit nor any consequential loss of information.

FCC compliance

NOTE:

THE MANUFACTURER IS NOT RESPONSIBLE FOR ANY RADIO OR TV INTERFERENCE CAUSED BY UNAUTHORIZED MODIFICATIONS TO THIS EQUIPMENT. SUCH MODIFICATIONS COULD VOID THE USER'S AUTHORITY TO OPERATE THE EQUIPMENT

NOTE: This equipment has been tested and found to comply with the limits for a Class B digital device, pursuant to Part 15 of the FCC Rules. These limits are designed to provide reasonable protection against harmful interference in a residential installation.

Luna™ Interactive Projection Camera



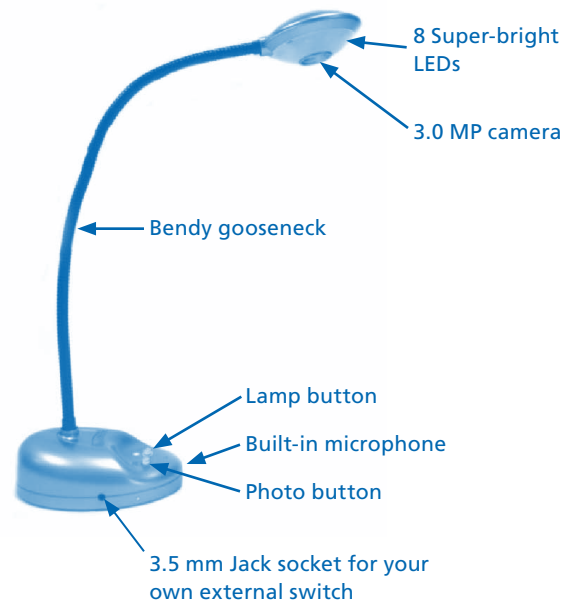
Please Read All Instructions Carefully Before Using

This equipment generates, uses and can radiate radio frequency energy and, if not installed and used in accordance with the instructions, may cause harmful interference to radio communications. However, there is no guarantee that interference will not occur in a particular installation.

If this equipment does cause harmful interference to radio or television reception, which can be determined by turning the equipment off and on, the user is encouraged to try to correct the interference by one or more of the following measures:

- Reorient or relocate the receiving antenna
- Increase the separation between the equipment and receiver
- Connect the equipment into an outlet on a circuit different from that to which the receiver is connected
- Consult the dealer or an experienced radio/TV technician for help

Know Your Luna™



Luna™ Controls

There are two buttons on the base of the Luna™:

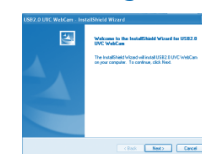
- Press the snapshot button to take a new picture
- Press the Light button to turn on the LEDs. Pressing the button repeatedly makes the LEDs brighter

In addition to the camera button, Luna™ has a 3.5 mm mono jack socket so that external switches can be used to take pictures.

Connecting to a PC:

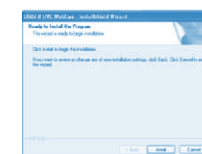
- Plug the Luna™ into an available USB socket.
- The first time Luna™ is connected to the PC, it will automatically install the drivers and may require the PC to be rebooted depending on your operating system.
- The PC will recognize the device as a USB Video device and it will appear as a video device in the Scanners and Cameras section in "My Computer".
- **For Luna™ to work reliably, computers with internal web cams must have their web cams disabled.**

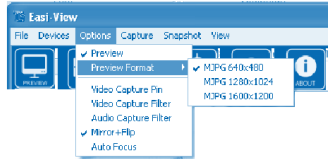
Installing Luna™ (PC Only)



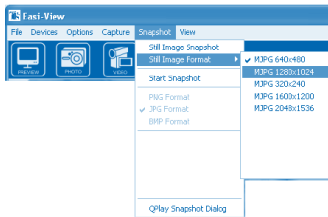
The procedure below is for windows XP (compatible with Vista).

- Connect the Luna™ to a USB port on your PC. Insert the CD into your PC and the setup program should launch automatically. If it does not launch automatically, double click the "setup.exe" icon. Click the Install button to continue.
- Click the "Next" button to continue.
- The installer will now copy the required files to your PC. It will also install DirectX if required.
- If you see this screen, click "Continue anyway."
- Click "Finish" to complete the installation.





The preview resolution can be set from the options menu.



The still picture resolution is set separately using the snapshot menu.

Taking pictures



To take a picture, use the snapshot button on the base of the Luna™, or simply click on the “photo” icon. To view your pictures, select “open my pictures” in the “View” menu and navigate to the folder which will be saved in date order.



If the image appears upside down, use rotate to flip the image so it is viewed correctly.



The Luna™ has an autofocus feature. You can refocus at any time by clicking on the focus icon.

Video capture



To capture live video, just click on the “video” icon. The icon will turn red and you will be asked for confirmation. To stop recording, just click on the icon once more. In the “capture” menu, there is an option to set the maximum capture time to prevent very large files being created.

Using Luna™ as a Web Cam

The Luna™ has a built-in microphone and can be used as a web cam with popular applications such as Messenger.

Technical specification

- 3.0 Mega Pixel true resolution
- Auto Focus (10cm minimum)
- 8 Super bright LEDs

Troubleshooting

Luna™ is designed to work reliably and predictably in all normal conditions. However, it is possible that problems may occur. Please check the following before contacting technical support.

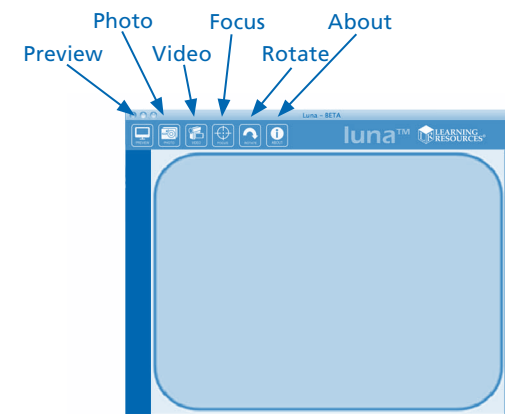
Problem	Auto Focus does not function
Solution	The PC has an internal web cam. This web cam must be disabled for your Luna™ to work correctly.
Problem	Image is too dark
Solution	Press the light button or use an external light source.

Using your Luna™ with Mac.

In addition to using the Luna™ with your PC, the Luna™ is also compatible with Mac (OS 10.6 and above).

Here’s how to get started:

1. Insert the included CD into your Mac.
2. Drag the LUNA™ MAC software to your desktop.
3. To launch the software, click on the Luna™ Icon.



Support & Warranty

This product is provided with a one-year warranty for problems found during normal usage. Mistreating the Luna™ or opening the unit will invalidate this warranty.

All out-of-warranty repairs will be subject to a replacement fee.

Please visit www.LearningResources.com for the latest product information and technical support.

© Learning Resources, Inc., Vernon Hills, IL (U.S.A.)
Please retain our address for future reference.
Made in China. LRM4400-GUD
Fabriqué en Chine. Informations à conserver.
Made in China. Bitte bewahren Sie unsere
Adresse für spätere Nachfragen auf.
Hecho en China. Conservar estos datos.

This device complies with Part 15 of the FCC Rules. Operation is subject to the following two conditions: (1) This device may not cause harmful interference, and (2) This device must accept any interference received, including interference that may cause undesired operation.

Warning: Changes or modifications to this unit not expressly approved by the party responsible for compliance could void the user’s authority to operate the equipment.



Your opinion matters! Visit
www.LearningResources.com
to write a product review or to
find a store near you.

RISQUE D'ÉTOUFFEMENT. Petites pièces.
Interdit aux enfants en dessous de 3 ans.
ERSTICKUNGSGEFAHR. Kleine Teile.
Nicht geeignet für Kinder unter 3 Jahren.
PELIGRO DE ASFIXIA. Piezas pequeñas.
No se recomienda para menores de 3 años.