

diamond tee

Designed by
Rae Blackledge



diamond tee

Designed by
Rae Blackledge

Skill Level

Intermediate


Finished Size

Extra Small (Small, Medium, Large)

Bust: 36 (42, 48, 54)" [91 (107, 122, 137)cm]

Length: 22 (23, 23½, 24)" [56 (58, 60, 61)cm]

Materials

- Willow Yarns™ Feather  (73% linen/27% cotton; 100g/252yds) -730052-0005 Chickadee [3 (4, 5, 5) balls]
- US size G-6 (4mm) hook or size needed to obtain gauge
- Yarn needle

Gauge

16 dc x 8 rows = 4" (10.2cm)

Save time, check your gauge.

Stitch Guide

diamonds pat (multiple of 12 sts + 2)

Note: When working diamonds pat, sts can refer to sc, dc, or ch sts.

Row 1 (RS): Ch 3 (counts as dc throughout), dc in next 5 sts, *ch 2, sk 2 sts, dc in next 10 sts; rep from * to last 8 sts, ch 2, sk 2 sts, dc in next 6 sts, turn.

Row 2: Ch 3, dc in next 3 sts, ch 2, sk 2 sts, dc in next 2 sts, *ch 2, sk 2 sts, dc in next 6 sts, ch 2, sk 2 sts, dc in next 2 sts; rep from * to last 6 sts, ch 2, sk 2 sts, dc in next 4 sts, turn.

Row 3: Ch 3, dc in next st, ch 2, sk 2 sts, *dc in next 6 sts, ch 2, sk 2 sts, dc in next 2 sts, ch 2, sk 2 sts; rep from * to last 10 sts, dc in next 6 sts, ch 2, sk 2 sts, dc in next 2 sts, turn.

Row 4: Ch 3, ch 1, sk 1 st, *dc in next 10 sts, ch 2, sk 2 sts; rep from * to last 12 sts, dc in next 10 sts, ch 1, sk 1 st, dc in next st, turn.

Row 5: Ch 3, dc in next st, ch 2, sk 2 sts, *dc in next 6 sts, ch 2, sk 2 sts, dc in next 2 sts, ch 2, sk 2 sts; rep from * to last 10 sts, dc in next 6 sts, ch 2, sk 2 sts, dc in next 2 sts, turn.

Row 6: Ch 3, dc in next 3 sts, ch 2, sk 2 sts, dc in next 2 sts, *ch 2, sk 2 sts, dc in next 6 sts, ch 2, sk 2 sts, dc in next 2 sts; rep from * to last 6 sts, ch 2, sk 2 sts, dc in next 4 sts, turn.

Rep Rows 1-6 for pat.

Pattern Notes

Tee is worked in two identical pieces for Front and Back. Tee is designed for 4-6" (10.2-15.2cm) of positive ease with a wide boat neck.

Instructions

Front/Back (make 2)

Ch 75 (87, 99, 111).

Row 1 (RS): Sc in second ch from hook, sc in each ch across, turn—74 (86, 98, 110) sc.

Rows 2-6: Ch 1, sc in each sc across, turn. Work in diamonds pat, starting with Row 1, until piece measures 15 (15½, 15½, 15½)" [38 (39, 39, 39)cm] from beg-ch.

Sleeves

At the beg of next 2 rows, ch 26 (includes ch 3 for beg of pat row), then beg working pat in fourth ch from hook—122 (134, 146, 158) sts, 10 (11, 12, 13) pat reps across row. Continue to work even in pat until piece measures 20 (21, 21½, 22)" [51 (53, 55, 56)cm] from beg-ch.

Shape Neck

First Shoulder

Next Row: Ch 3 and work 37 sts, turn leaving remainder of row unworked. Working across these 38 sts only, continue in pat until piece measures 22 (23, 23½, 24)" [56 (58, 60, 61)cm]. Fasten off.

Second Shoulder

Rejoin yarn 38 sts from left edge. **Next Row:** Ch 3 and work 37 sts, turn. Working across these 38 sts only, continue in pat until piece measures 22 (23, 23½, 24)" [56 (58, 60, 61)cm]. Fasten off.

Finishing

Sew Shoulder seams. Sew Sleeve and side seams.

Sleeve Cuffs

Rnd 1 (RS): Join yarn at Sleeve seam, ch 1, work approx 56 (60, 64, 68) sc around Sleeve, sl st in first sc to join. **Rnds 2-6:** Ch 1, sc in each sc around, sl st in first sc to join. Fasten off. Repeat for opposite Sleeve.

Neck Edging

Rnd 1 (RS): Join yarn at Shoulder seam, ch 1, work approx 128 (152, 176, 200) sc around Neck opening, sl st in first sc to join. **Rnds 2-6:** Ch 1, sc in each sc around, sl st in first sc to join. Fasten off. Weave in ends.

ABBREVIATIONS

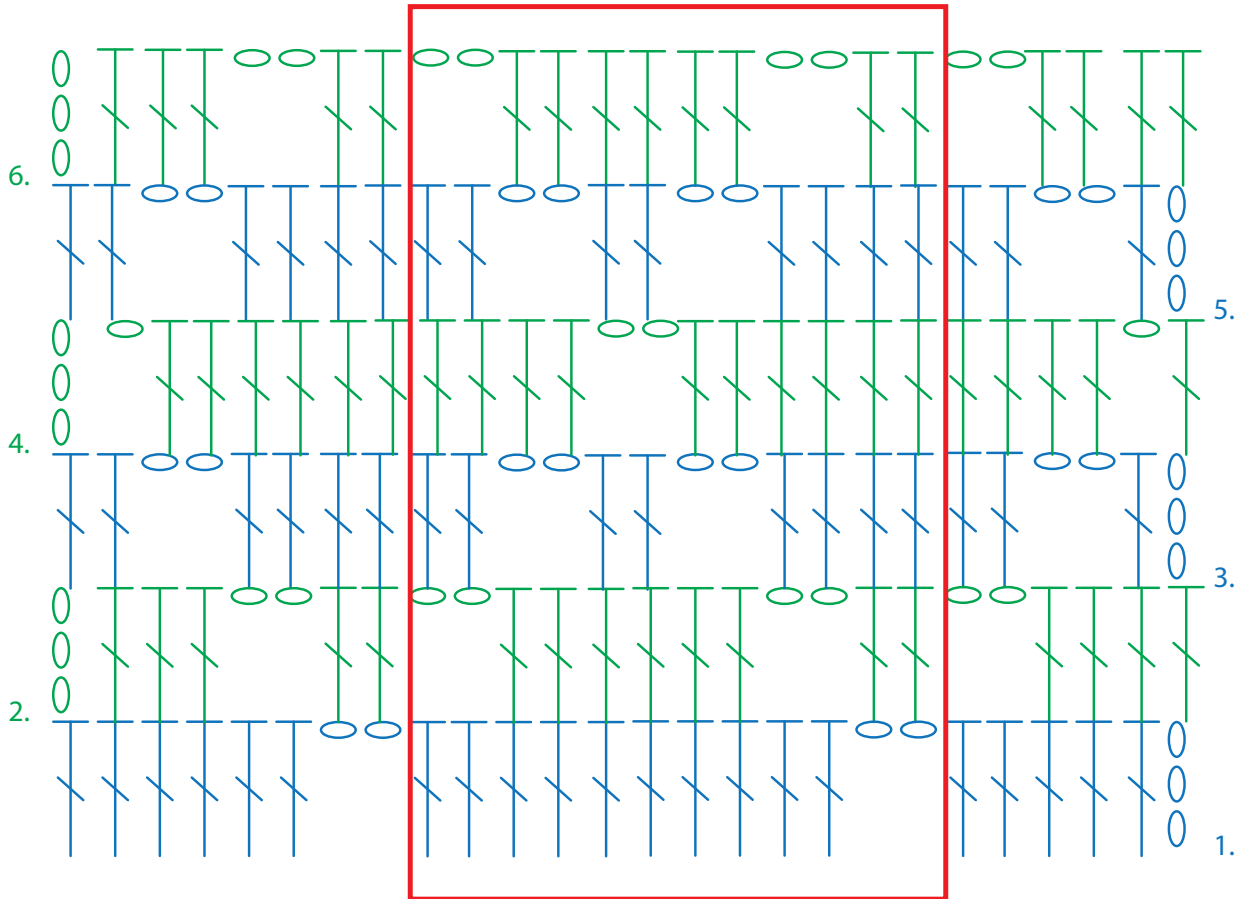
approx: approximately
beg: begin/beginning
ch: chain
cm: centimeter
dc: double crochet

pat: pattern
rep: repeat/repeats
rnd/rnds: round/rounds
RS: right side
sc: single crochet

sk: skip
sl st: slip stitch
st/sts: stitch/stitches

diamond tee

Designed by
Rae Blackledge



Legend

