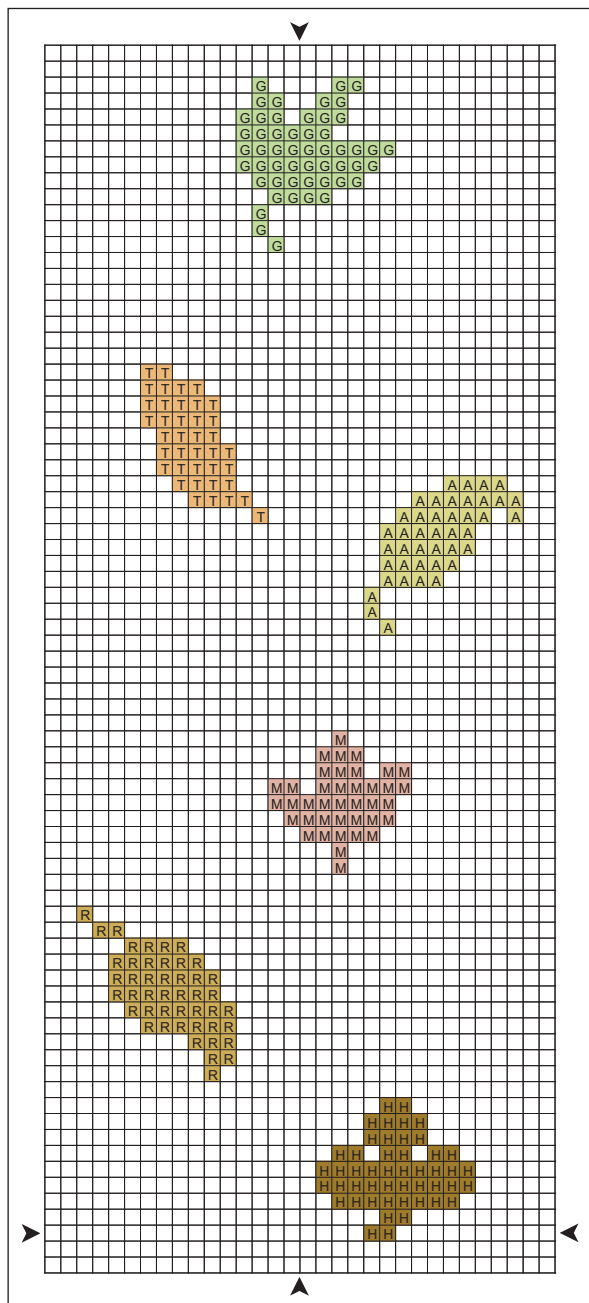


# Fall Place Mat & Napkin Ring

Casual enough for a fall picnic and pretty enough for your dining room table, this versatile set is ideal for any autumn occasion. The place mat and napkin ring are stitched on Vinyl-Weave™ so any small spills clean up easily!

Place Mat Stitch Count = 28w × 145h  
 Napkin Ring Stitch Count = 25w × 32h

*Herrschners®*



©2008 Herrschners, Inc.

## Fabric

One 12" × 18" (30.5cm × 45.7cm) piece of 14ct. White Vinyl-Weave by Crafter's Pride for each place mat

One 2¼" × 6" (5.7cm × 15.2cm) piece of 14ct. White Vinyl-Weave by Crafter's Pride for each napkin ring

## Place Mat Design Size

14ct. = 2" × 10⅜" (5.1cm × 26.4cm)

## Napkin Ring Design Size

14ct. = 1¾" × 2¼" (4.4cm × 5.7cm)

## Instructions

For the place mat, begin stitching the design on the Vinyl-Weave, a few stitches in from the upper left corner. Work cross-stitches with two strands of cotton embroidery floss. When you reach the end of the charted design, repeat the design nine stitches below the bottom of the last leaf, omitting the last leaf motif.

For the napkin ring, on the smaller piece of Vinyl-Weave, stitch only the last three leaf motifs in the center of the strip, according to the place mat instructions. Form a ring and hand-sew the ends together.

## SUGGESTED MATERIALS

[DMC® 6-Strand Embroidery Floss](#)  
 Herrschners Item #: ID700117

[Crafter's Pride VinylWeave™ - White](#)  
 Herrschners Item #: ID182100-0001

To order, visit [Herrschners.com](http://Herrschners.com)

## CROSS-STITCH

ANCHOR	DMC	COLOR
890	<b>R</b>	729 Medium Old Gold
279	<b>A</b>	734 Light Olive Green
359	<b>H</b>	801 Dark Coffee Brown
268	<b>G</b>	937 Medium Avocado Green
1001	<b>T</b>	976 Medium Golden Brown
1019	<b>M</b>	3802 Ultra Very Dark Antique Mauve